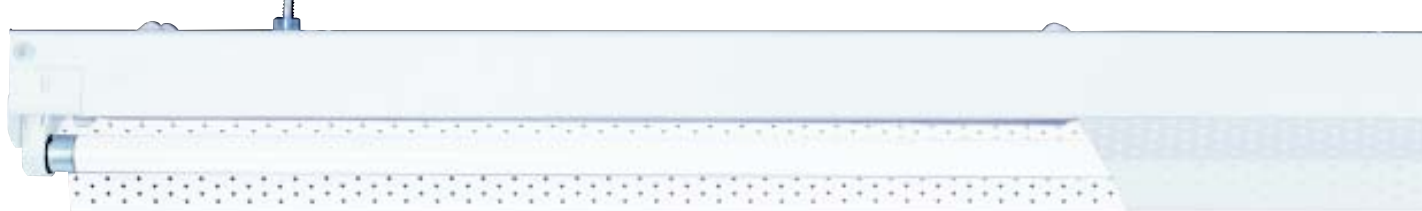


MS5 Series

Low-profile T5 Direct



Optimum performance



T8



T5

T5 lamp and ballast technology is a quantum leap in terms of *performance* and *size*. The 5000-lumen-output T5HO is 40 percent smaller than the T8! The MS5 Series meets the T5 and T5HO design challenges such as lamp size, luminous intensity and 35°C operating temperature, while featuring a diminutive appearance. Now a variety of demanding spaces can be addressed with compact, less-obtrusive, performance-driven luminaires.

- 95% lumen maintenance
- High luminaire efficacy
- 82 color rendition index

The MS5 Series creates a T5 solution for surface-mount and suspended direct applications, from contemporary ambient environments to focused task lighting.



Architectural Cove

- Low profile – minimized cove size
- Asymmetric reflectors for optimum light projection
- T5HO high-lumen package available
- Staggered options for uniformity
- Suitable for use with architectural molding



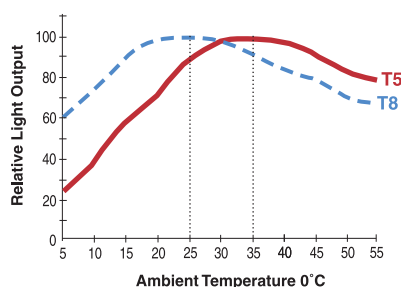
Retail

- Quality merchandising – excellent CRI
- Increased light levels
- Low maintenance
- Contemporary appearance
- Suspended or surface-mounted

... in a micro package!



Lumen Output vs. Temperature T8/T5



Optimizing T5 performance demands a thorough understanding of this leading-edge technology. *Low-profile T5 direct* luminaires must provide precise optical control, quality illumination, and maximum light output at the optimum luminous operating temperature. The *MS5 Series* meets all design requirements, plus offers various optical capabilities to create an unsurpassed array of T5 and T5HO lighting solutions for specific applications.

- One or two lamps (T5 or T5HO)
- Symmetric or asymmetric
- Solid or perforated
- Painted, galvanized or Miro™ finishes

MS5 – perfect integration of *high performance & low-profile size.*



Renovation

- Styles & finishes to complement surrounding architecture
- Versatile mounting
- T5HO high-lumen package available
- Easy to install
- Low maintenance

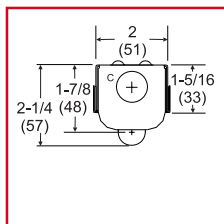


Warehousing / Manufacturing

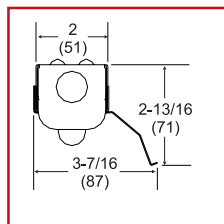
- Increased light levels for higher mounting heights (T5HO)
- Low-profile task lighting
- Excellent aisle lighting
- Heavy-duty, 20-gauge steel
- Polyester powder-coated for demanding environments

Configurations

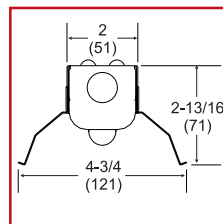
Inches (millimeters)



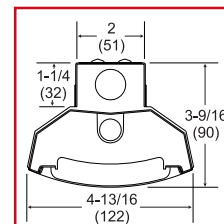
One or Two Lamps



Asymmetric
(ASMR)



Symmetric
(SMR)



Louver
(SBL)

Reflector Style and Finish



Solid or Perforated Painted



Solid or Perforated Galvanized
(GALV)



Solid or Perforated Miro™
(SAR95)

Lamp Comparison (Electronic Ballasts)

	T5	T5HO	T8
Lamp Designation	F28T5/800	F54T5/HO/800	F32T8/700
Initial Lamp Lumens	2900 @ 35°C	5000 @ 35°C	2850 @ 25°C
Ballast Factor	1.0	1.0	0.88
Ballast Input Watts – 2 Lamps	62	117	58
Color Rendering Index (CRI)	82	82	75 – 78
Lamp Lumen Depreciation	0.95	0.95	0.90

Nominal vs. Actual Lengths

		2'	3'	4'	8'
MS5 Channel	1 or 2 lamps	22-1/2"	34-1/4"	46-1/16"	92-1/16"
MS5SS Channel	1 lamp	22-1/2"	34-1/4"	46-1/16"	88-1/16"
	2 lamps	26-1/2"	38-1/4"	50-1/16"	96-1/16"

Ordering Information

Examples: **MS5 1 54T5HO SMR MVOLT GEB10PS**

MS5

Series	Number of lamps	Lamp type	Configuration	Finish	Reflector style	Options
MS5 T5 low-profile direct For tandem double-length unit, add prefix T . ¹ Example: TMS5	1, 2 Not included.	14T5 14W T5 (22") 21T5 21W T5 (34") 24T5HO 24W T5 HO (22") 28T5 28W T5 (46") 39T5HO 39W T5 HO (34") 54T5HO 54W T5 HO (46")	(blank) No reflector ASMR Asymmetric reflector SMR Symmetric reflector SBL White straight blade louver assembly (solid white reflectors included) ¹	(blank) White SAR95 Specular aluminum reflector-Miro™ (white channel) GALV Galvanized	(blank) Solid PERF Perforated Voltage 347², MVOLT³ Others available.	GEB10PS Electronic ballast, ≤10% THD, Program Start GLR Internal fast-blow fuse ⁴ GMF Internal slow-blow fuse ⁴ PLF Plug-in wiring, specify 1, 2 or 3 branch circuits and hot wires (A =black, B =red, C =blue, AB or AC) EL55 Emergency battery pack (nominal 390-700 lumens; consult factory) ^{1,4} CSA CSA Certified

NOTES:

- Available with 28W and 54W only.
- Available with 54W only.
- MVOLT (120-277V).
- Specify voltage.

Please see MS5SS specification sheet for more information on the staggered version
Please see MS5 specification sheet for more information on the standard version.