

NEMA TYPE 1 ENCLOSURES

GENERAL PURPOSE ENCLOSURES

For General Purpose Use

- 14-gauge steel ANSI-61 gray polyester powder finish
- Cover with coin slot latch
- Four mounting holes in back of enclosure
- In most cases, interior panel sold separately below



E6924



LL66078



No. 2W818

GENERAL PURPOSE ENCLOSURE SPECIFICATIONS AND ORDERING DATA

Height	Dimensions (In.) Width	Depth	J‡	Interior Panel Used	Model	Stock No.	Shpg. Wt.	
8	6	4	3 1/2		2W821	N1C060804	2W818	5.0
10	8	4	3 1/2		3A904	N1C081004	3A903	7.0
12	12	4	3 1/2		2W822	N1C121204	2W819	10.0
12	10	6	5 1/2		3A937	N1C101206	3A905	11.0
14	12	6	5 1/2		2W823	N1C121406	2W820	15.0
14	12	8	7 1/2		2W823	N1C121408	3A940	16.0
16	12	6 3/8	6			N1C121606	3A906	19.0
20	16	6 3/8	6		Panels	N1C162006	3A907	33.0
20	16	8 3/8	8			N1C162008	3A908	30.0
24	20	6 3/8	6		Included	N1C202406	6C714	50.0
24	20	8 3/8	8			N1C202408	5W275	43.0
30	24	8 3/8	8		With	N1C243008	6C715	78.0
30	24	10 3/8	10			N1C243010	5W276	83.0
36	30	12 3/8	12		Enclosure	N1C303612	5W277	120.0
36	24	8 3/8	8			N1C243608	6C716	93.0

(‡) Distance from inside cover to surface mounting panel.

INTERIOR PANEL SPECIFICATIONS AND ORDERING DATA

Dimensions (In.) L	W	Model	Stock No.	Shpg. Wt.
6 1/4	4 1/4	N1P0608	2W821	0.6
8 1/4	6 1/4	N1P0810	3A904	1.1
10 1/4	10 1/4	N1P1212	2W822	2.3
10 1/4	8 1/4	N1P1012	3A937	2.2
12 1/4	10 1/4	N1P1214	2W823	3.1



E6924



LL66078



No. 4KN71

HINGED CUTOUT BOXES

For Indoor Use

Listings and Certifications:

- 16-gauge steel, ANSI-61 gray polyester powder finish
- Formed steel hinge, pull handle, and friction catch
- Various sizes of knockouts on all four sides; mounting holes on back
- UL50 Listed, Type 1
- CSA Certified, Type 1
- NEMA/EEMAC, Type 1

HINGED CUTOUT BOX SPECIFICATIONS AND ORDERING DATA

Height	Dimensions (In.) Width	Depth	Model	Stock No.	Shpg. Wt.
6	6	4	A060604	4KN71	3.5
8	8	4	A080804	4KN72	5.0
12	12	4	A121204	4KN73	9.2



E23553



LL66078



No. 4KP28

SCREWCOVER ENCLOSURES

For Indoor Use

Listings and Certifications:

- 16-gauge steel, ANSI-61 gray polyester powder finish
- Flat removable covers fastened with plated steel screws
- Mounting holes on back
- UL50 Listed, Type 1 (except 4KP26)
- CSA Certified, Type 1
- NEMA/EEMAC, Type 1

SCREWCOVER ENCLOSURE SPECIFICATIONS AND ORDERING DATA

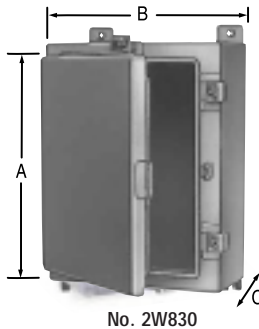
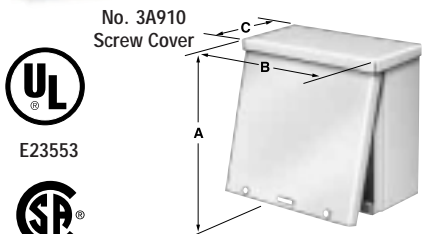
Height	Dimensions (In.) Width	Depth	Model	Stock No.	Shpg. Wt.
4	4	4	SC040404	4KP26	2.1
6	6	4	SC060604	4KP27	3.4
8	8	4	SC080804	4KP28	2.5
8	8	6	SC080806	4KP29	5.0
10	10	4	SC101004	4KP30	7.6
10	10	6	SC101006	4KP31	8.8
12	12	4	SC121204	4KP32	9.2
12	12	6	SC121206	4KP33	12.0

NEMA TYPE 3R ENCLOSURES

For Outdoor Use Where Exposed to Rain, Sleet, and Noncorrosive Liquids

- 16-gauge zinc coated steel, 14-gauge on Nos. 6C719 and 6C720
- Finish: ANSI 61 powder paint on inside and outside
- Comes with dripshield and rear mounting holes

- Interior panels sold separately (see data below)
- Screw cover has removable cover fastened at bottom by screws and is lockable (except No. 3A909)
- Hinged cover has continuous hinge door with hasp for padlocking



No. 4KN97

NEMA TYPE 3R SPECIFICATIONS AND ORDERING DATA

Cover Type	Dimensions (In.)			Interior Panel Used	Model	Stock No.	Shpg. Wt.
	A	B	C				
Hinged Draw Latch	8	6	4	2W821	RHC060804	3A913	5.4
	6 1/4	6 1/4	6	6C754	RHC080806	6C717	8.0
	12	10	6	3A937	RHC101206	3A939	11.0
Hinged Hinged Staple	16	12	6	2W827	RHC161206	3A921	20.0
	20	16	6	2W828	RHC201606	6C718	33.0
	4 7/8	4 7/8	8	3A922	RHC202008	5W278	43.0
	24	24	8	2W829	RHC242408	4KP25	57.0
	30	24	10	3A924	RHC302408	6C719	65.0
	36	24	12	3A932	RHC362412	6C720	85.0
Screw	6	4	4		RSC040604	3A909	2.7
	8	6	4		RSC060804	6C725	5.0
	8	6	6		RSC060806	6C727	6.0
	8	8	4		RSC080804	3A910	5.3
	10	8	6	None	RSC081006	6C728	8.0
	10	8	4		RSC081004	3A911	6.0
	12	10	4		RSC101204	6C726	8.6
	12	10	6		RSC101206	3A912	10.0
	15	12	4		RSC121504	2W833	13.0
	18	15	6		RSC151806	6C729	18.0

NEMA TYPE 4 AND TYPE 4 (JIC) ENCLOSURES

Provides nonsubmersible watertight protection for indoor/outdoor use where splashing, dripping, or hose down of non-corrosive liquids can occur.

- Heavy-duty gasketing; 14 gauge steel
- Finish: ANSI 61 powder paint inside and outside

- Cover mounted to box with a continuous hinge
- Stainless steel hinge pin and screw clamp latches
- Pocket on inside cover holds circuit diagrams; includes padlock hasp
- Interior panels sold separately below

Dimensions (In.)			Interior Panel Used	Model	Stock No.	Shpg. Wt.
A	B	C				
TYPE 4 (JIC) ENCLOSURES						
6	6	4	6XC20	BN4060604CH	4KN97	5.1
8	6	3	3A926	BN4080603CH	4KN98	5.8
10	8	4	3A928	BN4100804CH	4KP01	8.5
10	8	6	3A928	BN4100806CH	4KP02	10.0
12	10	5	6XC22	BN4121005CH	4KP03	13.0
12	12	6	4KP36	BN4121206CH	4KP06	15.0
14	12	6	6XC23	BN4141206CH	4KP08	18.0
16	14	6	3A930	BN4161406CH	4KP10	21.0
TYPE 4 ENCLOSURES						
16	12	6	2W827	N4161206	2W830	23.0
16	12	8	2W827	N4161208	6XC16	25.0
20	16	6	2W828	N4201606	2W831	32.0
20	16	8	2W828	N4201608	6C732	36.0
20	20	8	3A922	N4202008	3A923	39.0
24	20	6	6XC19	N4242006	6XC15	43.0
24	24	8	2W829	N4242408	2W832	50.0
30	24	8	3A924	N4302408	6C733	67.0
30	24	10	3A924	N4302410	5W279	62.0
36	24	8	3A932	N4362408	6XC17	71.0

INTERIOR PANEL SPECIFICATIONS AND ORDERING DATA

Dimensions (In.)		Model	Stock No.	Shpg. Wt.	Dimensions (In.)		Model	Stock No.	Shpg. Wt.
L	W				L	W			
4 7/8	4 7/8	P0606	6XC20	0.5	13	9	NP1612	2W827	3.5
6 1/4	4 1/4	N1P0608	2W821	0.6	14 3/4	12 1/2	P1614	3A930	4.3
6 1/4	6 1/4	N1P0808	6C754	1.0	17	13	NP2016	2W828	7.0
6 3/4	6	P0806	3A926	0.7	17	17	NP2020	3A922	8.0
8 3/4	6 7/8	P1008	3A928	1.3	21	17	NP2420	6XC19	12.0
10 1/4	8 1/4	N1P1012	3A937	2.2	21	21	NP2424	2W829	16.0
10 7/8	24	P1210	6XC22	2.2	27	21	NP3024	3A924	18.0
10 7/8	10 7/8	P1212	4KP36	2.6	33	21	NP3624	3A932	22.0
12 7/8	10 7/8	P1412	6XC23	3.0					

NEMA TYPES 4 (JIC) AND 4X STAINLESS STEEL ENCLOSURES

NEMA 4 (JIC) STAINLESS STEEL

- For regularly hosed down or other wet applications
 - Continuous hinge enclosures
 - 14 gauge stainless steel with grained exterior finish; available in both 304 and 316 stainless
- Conform to NEMA 4, 12, 13, and Joint Industrial Council standards
- Interior panels sold separately below; panels are not stainless steel
- Polyurethane Foam-In-Place seamless gasket



E6924



LL66078



No. 6XC08

NEMA TYPE 4 (JIC) SPECIFICATIONS AND ORDERING DATA								
Height	Dimensions (In.)			Type	Interior Panel Used	Model	Stock No.	Shpg. Wt.
	Width	Depth						
6	6	4		304	6XC20	BN4060604CHSS	6XC06	5.0
8	6	4		304	3A926	BN4080604CHSS	6XC07	5.9
12	10	6		304	6XC22	BN4121006CHSS	4KP05	13.0
10	8	4		304	3A928	BN4100804CHSS	6XC08	8.0
14	12	6		304	6XC23	BN4141206CHSS	6XC09	17.0
16	14	6		304	3A930	BN4161406CHSS	6XC10	21.0
6	6	4		316	6XC20	BN4060604CHSSA	4KN96	4.0
10	8	4		316	3A928	BN4100804CHSSA	4KN99	9.0
12	10	6		316	6XC22	BN4121006CHSSA	4KP04	13.0
14	12	6		316	6XC23	BN4141206CHSSA	4KP07	13.0
16	14	6		316	3A930	BN4161406CHSSA	4KP09	21.0

NEMA 4X STAINLESS STEEL

- Designed to hold electrical controls, terminals, and instruments in areas that are regularly hosed down
 - Single door enclosure
 - Doors have hasp and staple for padlocking. Removable print pocket
- External feet for mounting
- Grained exterior finish
- Conform to NEMA 3, 4, 12, & 13 standards
- Interior panels sold separately below; panels are not stainless steel
- Polyurethane Foam-In-Place seamless gasket



E6924



LL66078



No. 6XC24

NEMA TYPE 4X SPECIFICATIONS AND ORDERING DATA							
Height	Dimensions (In.)			Interior Panel Used	Model	Stock No.	Shpg. Wt.
	Width	Depth					
16	12	6		2W827	SSN4161206	6XC24	22.0
16	12	8		2W827	SSN4161208	6XC26	24.0
20	16	6		2W828	SSN4201606	6C734	36.0
24	20	6		6XC19	SSN4242006	6XC25	44.0
24	24	8		2W829	SSN4242408	6XC27	55.0
36	24	8		3A932	SSN4362408	6XC28	76.0
36	30	12		3A933	SSN4363012	6XC29	107.0

INTERIOR PANEL SPECIFICATIONS AND ORDERING DATA					
L	Dimensions (In.)		Model	Stock No.	Shpg. Wt.
	W				
4 7/8	4 7/8		P0606	6XC20	0.5
6 3/4	4 7/8		P0806	3A926	0.7
8 3/4	6 7/8		P1008	3A928	1.3
10 7/8	8 7/8		P1210	6XC22	2.2
12 1/8	10 7/8		P1412	6XC23	3.0
13	9		NP1612	2W827	3.5
14 3/4	12 7/8		P1614	3A930	4.3
17	13		NP2016	2W828	7.0
21	17		NP2420	6XC19	12.0
21	21		NP2424	2W829	16.0
33	21		NP3624	3A932	22.0
33	27		NP3630	3A933	28.0

IN-CHARGE™ CORROSION INHIBITOR

- Contains ingredients that absorb moisture and release a vapor that coats and protects surfaces inside enclosed areas
- Sold in packages of 2
- Applications include junction boxes and control panels
- Ideal for environments subject to salt, moisture, contaminants and corrosive substances

No. 4KL38. (Model 24106). 7-gm Inhibitor protects 5 cu-ft Shpg. wt. 0.2 lbs.

No. 4KL39. (Model 24108) 11-gm Inhibitor protects 11 cu.-ft. Shpg. wt. 0.2 lbs.



No. 4KL39

NEMA TYPE 12/13 ENCLOSURES



LL66078



E6924 (Hinged)
E23553 (Screw)
E64791 (Hinged/
Flange-Mounted)



N12
No. 2W824



SDN
No. 6C735

Interior panels sold separately - see below

JIC AND NEMA TYPE 12/13

- NEMA type 12 & 13 enclosures and NEMA type 13 models meet Joint Industrial Council (JIC) standards
- 14 gauge steel, ANSI 61 enamel inside and outside on NEMA 12 types
- Gray polyester powder exterior and interior on JIC types
- Polyurethane foam-in-place seamless gasket
- Pocket on inside cover to hold circuit diagrams on NEMA 12 types
- Screw cover has removable cover fastened at corners with captive plated screws
- Hinged cover has continuous hinge door with plated screw fastened clamps with hasp
- N12 Series has hasp for padlocking

FLANGE-MOUNTED DISCONNECT-NEMA TYPE 12/13

- Designed to house the following flange-mounted disconnects and operating mechanisms: Allen-Bradley 1494V, Cutler Hammer C3611C371, GE TDA, ITE maxi-flex and Square D Class 9422
- Will not accept Allen-Bradley 1494F or 1494D Series
- 14 gauge steel; ANSI 61 enamel inside and outside
- Removable print pocket
- External mounting feet
- Disconnect switch, operating mechanism and door hardware are not included

JIC & NEMA TYPE 12/13 SPECIFICATIONS AND ORDERING DATA

Cover Type	NEMA Type	Dimensions (In.)			Interior Panel Used	Model	Stock No.	Shpg. Wt.
		H	W	D				
Hinged	JIC, 12&13	4	4	3	None	B040403CH	6C730	2.3
Hinged	JIC, 12&13	6	4	3	4LV58	B060403CH	4KN93	3.0
Hinged	JIC, 12&13	6	6	4	6XC20	B060604CH	6XC00	4.0
Hinged	JIC, 12&13	8	6	3 1/2	3A926	B080603CH	6C731	6.0
Hinged	JIC, 12&13	8	8	4	6XC21	B080804CH	6XC01	7.0
Hinged	JIC, 12&13	10	8	4	3A928	B100804CH	4KN94	7.9
Hinged	JIC, 12&13	10	8	6	3A928	B100806CH	6XC02	10.0
Hinged	JIC, 12&13	12	10	5	6XC22	B121005CH	6XC03	12.0
Hinged	JIC, 12&13	12	12	6	4KP36	B121206CH	4KN95	7.9
Hinged	JIC, 12&13	14	12	6	6XC23	B141206CH	6XC04	16.0
Hinged	JIC, 12&13	16	14	6	3A930	B161406CH	6XC05	21.0
Hinged	JIC, 12	20	16	7	2W828	B201607CH	6C721	31.0
Hinged	JIC, 12	20	20	7	3A922	B202007CH	6C722	37.0
Hinged	JIC, 12	24	20	7	6XC19	B242007CH	6C723	43.0
Hinged	JIC, 12	24	24	9	2W829	B242409CH	6C724	54.0
Screw	JIC, 13	8	6	3 1/2	3A926	B080603SC	3A925	5.7
Screw	JIC, 13	10	8	6	3A928	B100806SC	3A927	10.0
Screw	JIC, 13	16	14	6	3A930	B161406SC	3A929	19.0
Hinged	12	16	12	6	2W827	N12161206	2W824	23.0
Hinged	12	20	16	6	2W828	N12201606	2W825	32.0
Hinged	12	20	16	8	2W828	N12201608	6XC12	35.0
Hinged	12	20	20	8	3A922	N12202008	3A931	38.0
Hinged	12	24	16	8	6XC18	N12241608	6XC13	39.0
Hinged	12	24	24	6	2W829	N12242406	6XC11	49.0
Hinged	12	24	24	8	2W829	N12242408	2W826	50.0
Hinged	12	30	24	8	3A924	N12302408	6C748	63.0
Hinged	12	30	24	10	3A924	N12302410	5W280	75.0
Hinged	12	36	24	8	3A932	N12362408	6XC14	71.0
Hinged	12	36	24	10	3A932	N12362410	5W281	71.0
Hinged	12	36	30	12	3A933	N12363012	5W282	104.0

FLANGE-MOUNTED DISCONNECT-NEMA TYPE 12/13

Cover Type	NEMA Type	Dimensions (In.)			Interior Panel Used	Model	Stock No.	Shpg. Wt.
		H	W	D				
Hinged	12	20	2 1/8	8	3A922	SDN12202108	6C735	44.0
Hinged	12/13	24	2 5/8	8	2W829	SDN12242508	6C736	58.0
Hinged	12/13	30	2 1/8	8	6C755	SDN12302108	6C737	59.0
Hinged	12	30	2 5/8	10	3A924	SDN12302510	6C738	71.0
Hinged	12/13	36	2 5/8	8	3A932	SDN12362508	4KP34	77.0
Hinged	12/13	36	3 1/8	10	3A933	SDN12363110	4KP35	105.0

INTERIOR PANEL SPECIFICATIONS AND ORDERING DATA

Dimensions (In.)				Stock No.	Shpg. Wt.	Dimensions (In.)			
L	W	Model				L	W	Model	
4 7/8	2 7/8	P0604	4LV58	0.3	17	13	NP2016	2W828	7.0
4 7/8	4 7/8	P0606	6XC20	0.5	17	17	NP2020	3A922	8.0
8	4 7/8	P0806	3A926	0.7	21	13	NP2416	6XC18	10.0
6 7/8	6 7/8	P0808	6XC21	1.0	21	17	NP2420	6XC19	12.0
8 3/4	6 7/8	P1008	3A928	1.3	21	21	NP2424	2W829	16.0
10 7/8	8 7/8	P1210	6XC22	2.2	27	21	NP3024	3A924	18.0
10 7/8	10 7/8	P1212	4KP36	2.6	27	17	NP3020	6C755	14.0
12 7/8	10 7/8	P1412	6XC23	3.0	33	21	NP3624	3A932	22.0
13	9	NP1612	2W827	3.5	33	27	NP3630	3A933	28.0
14 3/4	12 7/8	P1614	3A930	4.3					



Latch Kit for NEMA 12 enclosures. Single point key locking. Includes handle, cam plate, hardware and instructions. (Model WA-L2A)
No. 2W839. Shpg. wt. 0.8 lbs.

Replacement Clamp Assembly for NEMA 12 enclosures. Includes clamp, screw, spring, and washers (2). (Model WAN12RA)
No. 4KP41. Shpg. wt. 0.1 lbs.

ACCESSORIES FOR AM ENCLOSURES
Standard DIN 3mm Replacement Lock for use on AM enclosures. (Model AMLS 2532)
No. 4KN84. Shpg. wt. 1.0 lbs.

Key for No. 4KN84 lock above. (Model RAO172)
No. 4KP22. Shpg. wt. 1.0 lbs.

Slotted Screwdriver Insert for No. 4KN84 above. (Model AMLS 2550)
No. 4KN85. Shpg. wt. 1.0 lbs.

Key Lock for use on AM enclosures. (Model RCA0013)
No. 4KP24. Shpg. wt. 1.0 lbs.

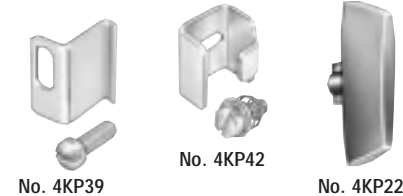
Mounting Bracket for AM enclosures. Pack of 4. (Model RAO240)
No. 4KP23. Shpg. wt. 1.0 lbs.

OIL TIGHT HOLE SEALS
Seal unused pushbutton or conduit holes. See ordering data below.



Cylinder Lock Kit for JIC enclosures. Keyed alike. (Model WACLJIC)
No. 4KP38. Shpg. wt. 1.0 lbs.

Padlock Kit for JIC enclosures. (Model WAPLKJIC)
No. 4KP43. Shpg. wt. 1.0 lbs.



Replacement Clamp Assembly for JIC enclosures. Includes clamp and screw. (Model WAJICRA)
No. 4KP39. Shpg. wt. 0.1 lbs.

Replacement Clamp Assembly for NEMA 4X enclosures. Includes clamp, screw, spring, and washers (2). (Model WAN4XRA)
No. 4KP42. Shpg. wt. 1.0 lbs.

OIL TIGHT HOLE SEALS SPECIFICATIONS AND ORDERING DATA

Material	Application	Hole Diameter (In.)	Model	Stock No.	Shpg. Wt.
Steel	Standard Pushbutton	1 ¹ / ₄	WA-SPB	2W838	0.3
Stainless Steel	Standard Pushbutton	1 ¹ / ₄	WA-SPBSS	6C744	0.3
Steel	1/2" Conduit holes	7/8	WA-S050	6C749	0.3
Stainless Steel	1/2" Conduit holes	7/8	WA-S050SS	6C742	0.3
Steel	3/4" Conduit holes	1 ¹ / ₈	WA-S075	6C750	0.3
Stainless Steel	3/4" Conduit holes	1 ¹ / ₈	WA-S075SS	6C743	0.3
Steel	1" Conduit holes	1 ³ / ₈	WA-S100	6C756	0.3
Stainless Steel	1" Conduit holes	1 ³ / ₈	WA-S100SS	6C757	0.3
Steel	1 ¹ / ₄ " Conduit holes	1 ⁵ / ₈	WA-S125	6C751	0.3
Stainless Steel	1 ¹ / ₄ " Conduit holes	1 ⁵ / ₈	WA-S125SS	6C745	0.3
Steel	1 ¹ / ₂ " Conduit holes	2	WA-S150	6C752	0.3
Stainless Steel	1 ¹ / ₂ " Conduit holes	2	WA-S150SS	6C746	0.3
Steel	2" Conduit holes	2 ¹ / ₂	WA-S200	6C753	0.3
Stainless Steel	2" Conduit holes	2 ¹ / ₂	WA-S200SS	6C747	0.3
Steel	2 ¹ / ₂ " Conduit holes	3	WA-S250	4KP50	0.5



Louver Plate Kit No. 6C740



Nos. 2W840 and 3A938 Cylinder Locks



3-Point Key Lock No. 4KP40

Louver Plate Kits provides ventilation or cooling in enclosures when required. Includes all hardware for field installations. 14 gauge steel. ANSI enamel finish. See ordering data below.

Cylinder Lock for use on NEMA 1 enclosures. Keyed alike. (Model WA-L12B)
No. 2W840. Shpg. wt. 0.3 lbs.

Cylinder Lock for use on NEMA 12 enclosures. Keyed alike. (Model WA-CLSN12)
No. 3A938. Shpg. wt. 0.3 lbs.

3-Point Key Lock for for large N1C enclosures. (Model WAL12AR)
No. 4KP40. Shpg. wt. 1.0 lbs.

LOUVER PLATE KIT SPECIFICATIONS AND ORDERING DATA

Cutout Size (In.)		No. of Louvers	Louver Length (In)	Louver (In.)		Model	Stock No.	Shpg. Wt.
H	W			H	W			
3 ¹ / ₂	4 ¹ / ₄	3	4	4 ¹ / ₂	5 ¹ / ₂	WAVK0403	6C739	1.0
4 ³ / ₈	6 ¹ / ₄	4	6	5 ⁵ / ₈	7 ¹ / ₂	WAVK0604	6C740	1.3
6 ⁵ / ₁₆	8 ¹ / ₄	6	8	8 ⁵ / ₁₆	9 ¹ / ₂	WAVK0806	6C741	2.0

AM NEMA 12/IP55 TYPE & OIL TIGHT PUSHBUTTON ENCLOSURES

AM NEMA 12/IP55 TYPE ENCLOSURES

- 16-gauge steel, RAL 7032 textured beige finish
 - Robotic seam welded construction with concealed hinges
 - Molded polyurethane 1-piece gasket
 - 1/4-Turn DIN lock
 - Grounded studs on body, door, and mounting plate
 - Optional mounting brackets available on page 711705
- Listings and Certifications:
- UL508 Listed, Types 1, 12, & 13
 - CSA Certified, Type 12 meets NEMA.EEMAC Types 1, 12, & 13 requirements
 - IEC Ingress Protection IP55



ENCLOSURE SPECIFICATIONS AND ORDERING DATA							
Height	Dimensions (In.)			Interior Panel Used	Model	Stock No.	Shpg. Wt.
	Width	Depth					
9.84	7.87	5.91		4KN86	AM0252015	4KN74	7.0
11.81	9.84	5.91		4KN87	AM0302515	4KN75	9.0
11.81	11.81	5.91		4KN88	AM0303015	4KN76	9.0
11.81	11.81	7.87		4KN88	AM0303020	4KN77	12.0
15.75	11.81	7.87		4KN89	AM0403020	4KN78	14.0
19.69	15.75	5.91		4KN90	AM0504015	4KN79	18.0
19.69	15.75	7.87		4KN90	AM0504020	4KN80	20.0
23.62	15.75	7.87		4KN91	AM0604020	4KN81	25.0
23.62	19.69	5.91		4KN92	AM0605015	4KN82	25.0
23.62	19.69	7.87		4KN92	AM0605020	4KN83	28.0

AM NEMA 12/IP55 TYPE INTERIOR ENCLOSURE PANELS

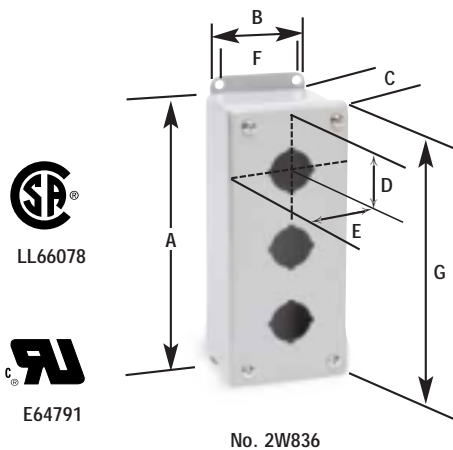
- 12 Gauge (2.5mm) steel
- Zinc-plated finish



INTERIOR PANEL SPECIFICATIONS AND ORDERING DATA					
Length	Dimensions (In.)		Model	Stock No.	Shpg. Wt.
	Width				
8.66	5.91		AMPZ02520	4KN86	1.3
10.63	7.87		AMPZ03025	4KN87	1.3
10.63	9.84		AMPZ03030	4KN88	2.9
14.57	9.84		AMPZ04030	4KN89	4.0
18.50	13.78		AMPZ05040	4KN90	7.1
22.44	13.78		AMPZ06040	4KN91	8.8
22.44	17.72		AMPZ06050	4KN92	11.0

OIL TIGHT PUSHBUTTON ELECTRICAL ENCLOSURES

- Oil tight pushbutton enclosure housings made of 14 gauge steel or stainless steel
- ANSI 61 powder paint inside and outside or stainless grained finish
- Neoprene gasketing and mounting flange included
- Pushbutton holes are (1¹³/₆₄") 30mm in diameter
- Conform with Joint Industrial Council (JIC) Standard EGP-1-1967



OIL TIGHT PUSHBUTTON ENCLOSURE SPECIFICATIONS AND ORDERING DATA											
No. Holes	No. Columns	A		Dimensions (In.)			F	G	Model	Stock No.	Shpg. Wt.
				C	D	E					
14 Gauge Steel											
1	1	3 1/2	3 1/4	2 3/4	1 1/8	1 3/4	2 3/8	4	PB-1	2W834	2.0
2	1	5 3/4	3 1/4	2 3/4	1 1/8	1 3/4	2 3/8	6 1/4	PB-2	2W835	2.8
3	1	8	3 1/4	2 3/4	1 1/8	1 3/4	2 3/8	8 1/2	PB-3	2W836	3.3
4	1	10 1/4	3 1/4	2 3/4	1 1/8	1 3/4	2 3/8	10 3/4	PB-4	3A934	3.8
6	2	9 1/2	6 1/4	3	2 5/8	2 1/8	5 3/8	10	PB-6	2W837	6.0
9	3	9 1/2	8 1/2	3	2 5/8	2 1/8	7 5/8	10	PB-9	3A935	7.0
12	3	11 3/4	8 1/2	3	2 5/8	2 1/8	7 5/8	12 1/4	PB-12	3A936	7.9
Stainless Steel											
1	1	3 1/2	3 1/4	2 3/4	1 1/8	1 3/4	2 3/8	4	PBSS01	4KP15	2.0
2	1	5 3/4	3 1/4	2 3/4	1 1/8	1 3/4	2 3/8	6 1/4	PBSS02	4KP16	2.5
3	1	8	3 1/4	2 3/4	1 1/8	1 3/4	2 3/8	8 1/2	PBSS03	4KP17	3.0
4	1	10 1/4	3 1/4	2 3/4	1 1/8	1 3/4	2 3/8	10 3/4	PBSS04	4KP18	4.0
6	2	9 1/2	6 1/4	3	2 5/8	2 1/8	5 3/8	10	PBSS06	4KP19	6.0

NEMA 12/IP55 TYPE COMPUTER CABINETS



No. 4KP11



- 14 Gauge steel, RAL 7032 textured beige finish
- 1-Piece molded polyurethane gasket
- Keyboard panel: hinged, with stop; sliding mouse pad
- Monitor shelf with mounting clamps; glass viewing window (14-15" or 19-21")
- 4-Point locking with swing handle and round cylinder on rear door; small wing handle with lock cylinder on front doors (top & bottom), cylinder lock on hinged panel

Listings and Certifications:

- UL508 Listed, Type 12
- CSA Certified, Type 12
- Meets NEMA/EEMAC Type 12 requirements
- IEC Ingress Protection IP55

COMPUTER CABINET SPECIFICATIONS AND ORDERING DATA

Height	Dimensions (In.)		Model	Stock No.	Shpg. Wt.
	Width	Depth			
63	23.6	23.6	CPC16066	4KP11	220.0
63	23.6	31.5	CPC16068	4KP12	242.0

ACCESSORIES FOR COMPUTER CABINETS

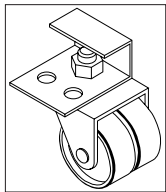
Base For Computer Cabinets is made of 2mm (ga) steel with textured beige RAL 7032 polyester powder paint finish. Provides an easy and safe entry for cables through gasketed side opening. 1.97" high. See ordering data below.

Caster Kit for computer cabinets. Mounts directly to PCP base below. (Model CTR70)

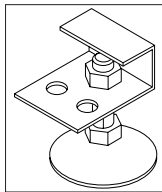
No. 4KP13. Shpg. wt. 20.0 lbs.

Leveling Kit for computer cabinets. Mounts directly to PCP base below. (Model LF30)

No. 4KP14. Shpg. wt. 6.0 lbs.



No. 4KP13



No. 4KP14



No. 4KP20

COMPUTER CABINET BASE SPECIFICATIONS AND ORDERING DATA

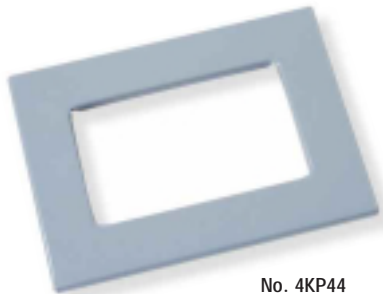
Dimensions (In.)		Model	Stock No.	Shpg. Wt.
Width	Depth			
23.6	23.6	PCP0566	4KP20	40.0
23.6	31.5	PCP0568	4KP21	45.0

ELECTRICAL ENCLOSURE ACCESSORIES

ENCLOSURE WINDOW KITS

- Steel windows kits are designed to be used indoors on NEMA 4 and 12 enclosures
- Stainless steel window kits are suitable for NEMA 4, 4X, 12, and 13 enclosures in indoor and outdoor applications where corrosion is a problem
- Easily installed by making a cutout in the enclosure and attaching window and frame in place; all necessary hardware is included

- Fully gasketed to maintain water-tight seal
- Heavy steel frames with ANSI 61 polyester powder finish over phosphotized surface, or Type 304 stainless steel with a grained finish



No. 4KP44

ENCLOSURE WINDOW KITS SPECIFICATIONS AND ORDERING DATA

Window Size (In.) Height	Width	Frame Size (In.)		Required Height	Cut-Out (In.) Width	Model	Stock No.	Shpg. Wt.
		Height	Width					
Steel Window Kits								
5	3.0	7.5	5.5	6.69	4.69	WAPWK0503NF	4KP44	2.0
9	5.5	11.5	8.5	10.69	7.19	WAPWK0905NF	4KP46	3.0
13	8.0	15.5	10.5	14.69	6.69	WAPWK1308NF	4KP48	4.0
Stainless Steel Window Kits								
5	3.0	7.5	5.5	6.69	4.69	WAPWK0503SS	4KP45	2.0
9	5.5	11.5	8.5	10.69	7.19	WAPWK0905SS	4KP47	3.0
13	8.0	15.5	10.5	14.69	6.69	WAPWK1308SS	4KP49	4.0