

**Plug Series****Littel 1/4", Right Angle 1/4", Silent, Super Heavy Duty Plug Series**

Switchcraft Littel Plugs all feature one-piece tip rods for added strength and durability. All are offered in a wide variety of configurations, including straight, right angle, shielded, screw or solder terminals. The Heavy Duty Speaker plugs have larger cable clamps and are rated at 15A. The Silent plugs have a unique circuit-closing device which stops hums, pops, and squeals when the plug is removed or inserted from the jack. Miti plugs feature heavy duty brass construction, rugged cable clamps, and spring flex reliefs. All plugs meet EIA standards for tip configuration, which ensures you they mate properly with the jack.

**Specifications****Electrical**

Contact Resistance (typical Depends on Mating Jack):  
 < 0.020 ohms  
 Dielectric Withstand Voltage: 500 VAC (minimum)  
 Insulation Resistance @ 500 VDC: 2,000 megohms (minimum)  
 Insulation Resistance (after Mil-Std-202 Salt Spray): 1,000 megohms (minimum)  
 Working Voltage: 250 VAC, 140 VDC  
 Insert/Withdrawal Force:  
 Depends on Mating Jack  
 Soldering Requirement:  
 ANSI/J-Std-001  
 Temperature Range: -40°C to +85°C  
 U.L. Component Recognition File No: E118169  
 Life: Depends on Mating Jack

**Materials**

Tip: Nickel-plated copper alloy  
 Sleeve: Nickel-plated copper alloy  
 Handle: Nickel-plated copper alloy  
 Tip Terminal: Copper alloy, electrotin-plated  
 Cable Clamp: Copper alloy, electro-tinplated

**See Next Page for Ordering Information**

## Plug Series

## Littel 1/4", Right Angle 1/4", Silent, Super Heavy Duty Plug Series

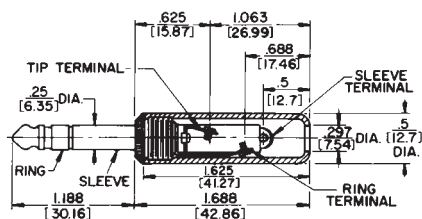
## Ordering Information

Part No.	Typical Conductors	Terminals	Mating Jack	Handle	Notes
<b>1/4" Littel Plug Series</b>					
240	2	Screw	11	Black	
245	2	Screw	11	Red	
250	2	Solder	11	Black	
260	2	Screw	11	Black	
270	2	Screw	11	Black	
280	2	Solder	11	Shielded	
281	2	Solder	11	Shielded	Unassembled
580	2	Solder	11	Shielded	Diecast handle
285	2	Solder	11	Shielded	Unassembled
285L	2	Solder	11	Shielded	Larger cable clamp
267	3	Solder	12B	Black	
290	3	Screw	12B	Shielded	
297	3	Solder	12B	Shielded	
299	3	Solder	12B	Shielded	Diecast handle
<b>Heavy Duty Speaker Plugs</b>					
184	2	Solder	11 or Z15J	Shielded	Accepts Cable OD up to .375"
188	2	Solder	11 or Z15J	Shielded	Accepts Cable OD up to .450"
187	2	Solder	11 or Z15J	Shielded	Accepts Cable OD up to .330"
187B	2	Solder	11 or Z15J	Shielded	Black Handle, accepts Cable OD up to .330"
<b>Right Angle 1/4" Plugs</b>					
226	2	Solder	11	Shielded	
228	2	Solder	11	Shielded	Flat handle
236	3	Solder	12B	Shielded	
238	3	Solder	12B		Flat handle
<b>Silent Plug</b>					
172	2	Screw	11	Shielded	
181	2	Solder	11	Shielded	
<b>Miti Plugs</b>					
174S	2	Solder	11 or Z15J	Shielded	Brass finish, spring flex relief

## Plug Series Dimension Drawings

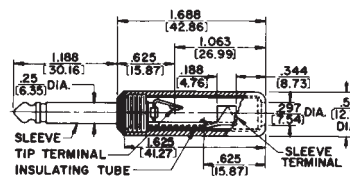
### Littel Plug 1/4" Series

260



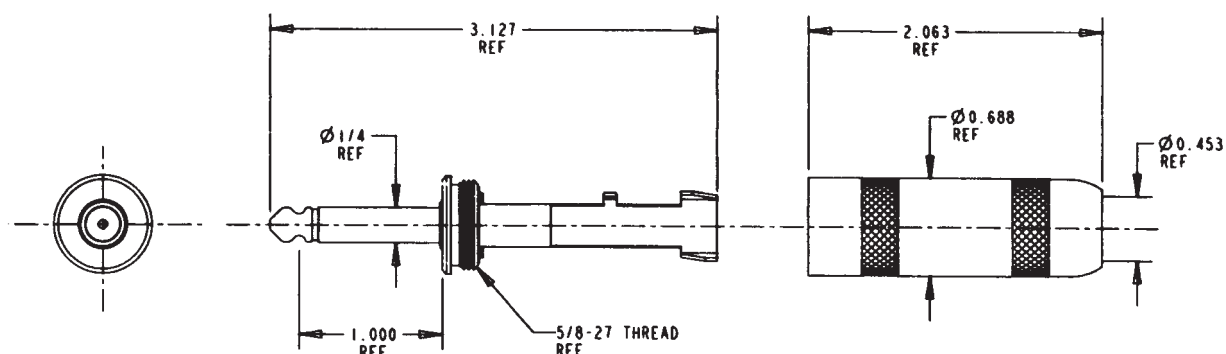
No. 260 typical — shown with screw-type terminals and plastic handle.

280 Typical

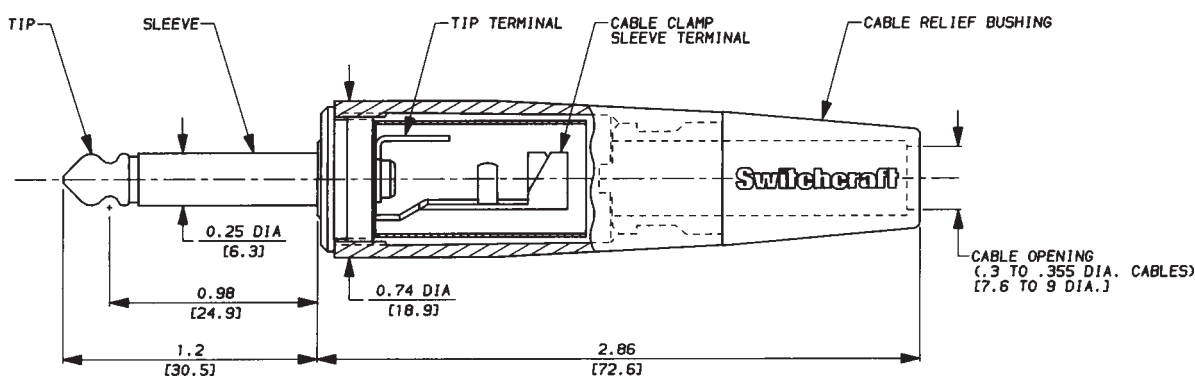


No. 280 typical — shown with solder lug terminals, cord clamp and shielded handle.

188



187BL



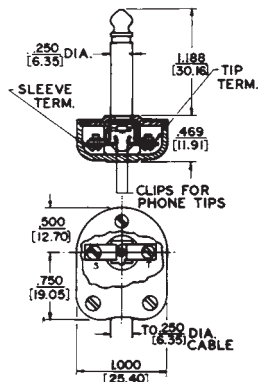
No. 187BL (Typical)

DIMENSIONS ARE FOR REFERENCE ONLY Inch  
(mm)

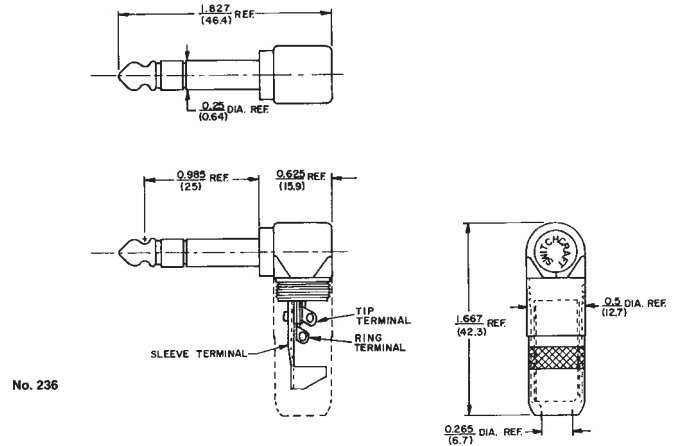
## Plug Series Dimension Drawings

### Littel Right Angle 1/4", Silent, Super Heavy Duty Plug Series

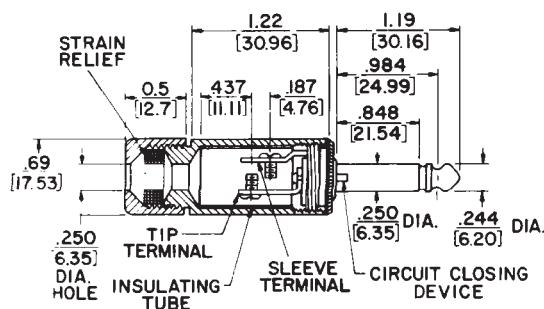
#### 228 Right Angle 1/4" Plugs



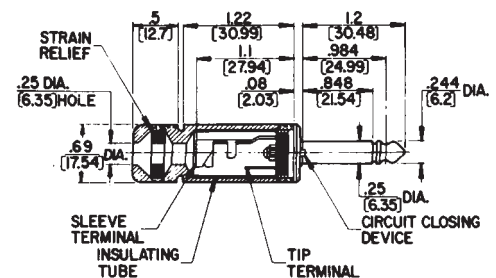
#### 236 Right Angle 1/4" Plugs



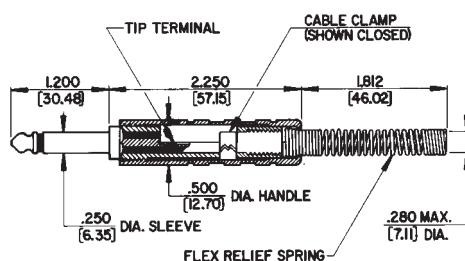
#### 172



#### 181 Silent Plug



#### 174S Super Heavy Duty Plug



DIMENSIONS ARE FOR REFERENCE ONLY Inch  
(mm)