

FEATURES & SPECIFICATIONS

INTENDED USE

T5 linear direct fluorescent intended for use in low-profile commercial, retail and manufacturing applications.

ATTRIBUTES

Designed exclusively for use with T5 lamps, T5 sockets and T5 electronic ballasts.

CONSTRUCTION

Housing formed from cold-rolled steel. No asbestos is used in this product. Heavy-duty 20-gauge channel.

Extended-height end caps retain and support sockets. For full-length, end-of-row end caps, see accessories. Compact T5 socket features rotating collar and enclosed contacts.

FINISH

High-gloss, baked white enamel finish. Five-stage iron-phosphate pretreatment ensures superior paint adhesion and rust resistance.

OPTICAL SYSTEM

Unique white straight blade louver provides excellent shielding.

ELECTRICAL SYSTEM

Thermally protected, resetting, Class P, HPF, non-PCB, UL Listed.

Suitable for damp locations. AWM, TFN or THHN wire used throughout, rated for required temperatures.

INSTALLATION

Labor-saving coupler supplied for row mounting. Numerous knockouts for easy installation. Surface-mount or suspended.

LISTING

UL Listed and CSA Certified (see Options).

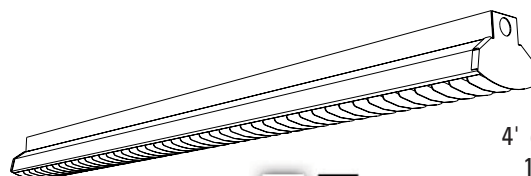
WARRANTY

Guaranteed for one year against mechanical defects in manufacture.

Specifications subject to change without notice.

Low-Profile T5 Direct Louver

MS5



4' or 8' Lengths
1 or 2 Lamps

T5
Technology

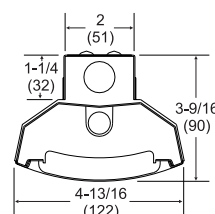
Specifications

Length: 46-1/16 (1169) or 92-1/16 (2337)

Width: 4-13/16 (122)

Depth: 3-9/16 (90)

Weight: 8.4 lbs (3.8 kg)



ORDERING INFORMATION

Example: **MS5 1 54T5HO SBL MVOLT GEB10PS**

MS5						
Series	Number of lamps	Lamp type	Configuration	Voltage	Options	
MS5 T5 low-profile direct	1, 2 Not included.	28T5 28W T5 (46") 54T5HO 54W T5 HO (46")	SBL White straight blade louver assembly (solid white reflectors included)	347², MVOLT³ Others available.	GEB10PS Electronic ballast, ≤10% THD, Program Start	
For tandem double-length unit, add prefix T . ¹ Example: TMS5					GLR Internal fast-blow fuse ⁴	
					GMF Internal slow-blow fuse ⁴	
					PLF Plug-in wiring, specify 1, 2 or 3 branch circuits and hot wires (A =black, B =red, C =blue, AB or AC)	
					EL55 Emergency battery pack (nominal 390-700 lumens; see Fluorescent Battery Packs tab) ^{1, 4}	
					CSA CSA Certified	

Accessories

Order as separate catalog number.

THMS5	Tong hanger
MSSEP SBL	Full depth end plate for standard reflector (1 pair)
1B	Ceiling spacer (adjusts from 1-1/2" to 2-1/2" from ceiling)
SQ	Swivel stem hanger (specify length in 2" increments)
MSSACF	Adjustable aircraft cable system with power feed (specify length as 36 , 72 or 108 inches) ^{5, 6, 7}
MS5AC	Adjustable aircraft cable system (specify 36 , 72 or 108 inches) ^{5, 6}

NOTES:

- 1 Only available with 28W and 54W.
- 2 Only available with 54W.
- 3 MVOLT (120-277V).
- 4 Specify voltage.
- 5 120-277V only for power feed.
- 6 Standard wire size for power feed is 18 gauge. For 12 gauge add **12AWG** to the end of catalog number. Consult factory for length of runs and required wire size.
- 7 Available with 3', 4' and 8' lengths only.

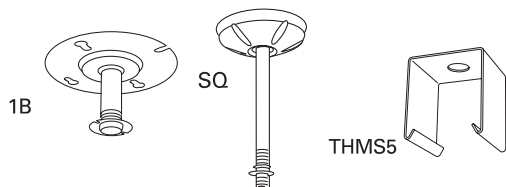
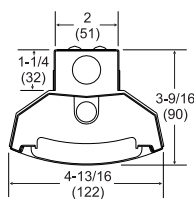
MS5 T5 Direct, Low Profile, Louver**MOUNTING DATA**

For unit or row installation, surface or stem mounting.

Unit installation — Minimum of two hangers required.

Row installation — One hanger per channel plus one per row required.

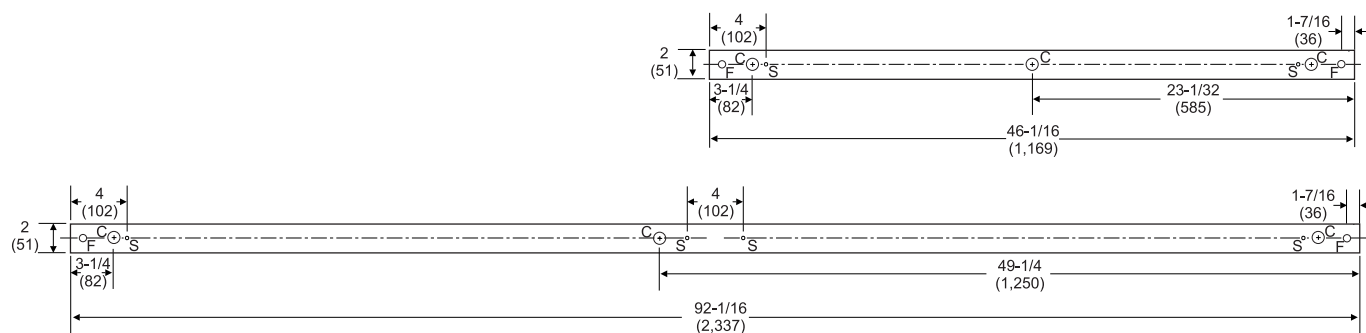
Hanging devices illustrated below.

**DIMENSIONS****LOUVER****CHANNELS**

C = 7/8 (22) Dia. K.O.

F = 7/16 (11) Dia. K.O.

S = 1/4 (6) Dia. K.O.

**PHOTOMETRICS**

Calculated using the zonal cavity method in accordance with IESNA LM41 procedure. Floor reflectances are 20%. Lamp configurations shown are typical. All data based on 25°C. Full photometric data on these and other configurations available upon request.

MS5 1 54T5HO SBL MVOLT GEB10PS**Report LTL 9104**

Lumens per lamp - 4400 – Lum. eff. - 93.3%

S/MH (along) 1.1 (across) 1.4

Coefficient of Utilization

	80%			70%			50%		
	70%	50%	30%	70%	50%	30%	50%	30%	10%
0	111	111	111	109	109	109	104	104	104
1	102	98	94	99	95	92	91	89	86
2	93	85	79	91	84	78	80	76	72
3	85	75	68	83	74	67	71	65	60
4	78	67	59	76	66	58	63	57	52
5	72	60	52	70	59	51	57	50	45
6	66	54	46	64	53	45	51	44	39
7	61	49	41	60	48	41	47	40	35
8	57	45	37	56	44	37	43	36	31
9	53	41	33	52	40	33	39	33	28
10	50	38	31	49	37	30	36	30	25

Zonal Lumens Summary

Zone	Lumens	%Lamp	%Fixture
0-30	1175	26.7	28.6
0-40	1918	43.6	46.7
0-60	3374	76.7	82.1
0-90	4107	93.3	100.0
90-180	0.0	0.0	0.0
0-180	4107	93.3	100.0