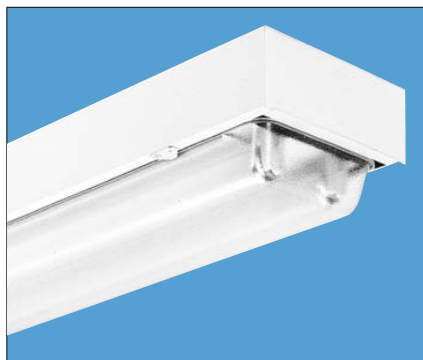


Enclosed Steel Housing

DMS

DMSW



Intended Use

For low to medium mounting heights and harsh environments where dust, dirt, humidity or moisture is present. Ideal for canopies, shipping docks, refrigerated areas and other non-hazardous environments.

Features

Fully gasketed, totally enclosed fixture is available in heavy-duty steel or aluminum housing (AL option) with a baked white enamel finish. A shatter-resistant 15% DR acrylic diffuser (50% DR available) is secured by captive, corrosion-resistant pivot latches.

Ballast – Thermally protected, resetting, Class P, HPF, non-PCB, UL Listed, CSA Certified ballast is standard. Sound rating depends on lamp/ballast combination.

Wiring and Electrical – AWM, TFN or THHN wire used throughout, rated for required temperatures.

Mounting – For unit or row installations, surface or suspended mounting. Wet location DMSW available for covered ceiling mount only.

Listings

UL Listed (standard). CSA Certified or NOM Certified (see Options). Suitable for damp locations. DMSW is listed for wet locations covered ceiling applications.

Ordering Information

Example: **DMS 2 32 MVOLT GEB10IS**

| Series | Number of lamps | Lamp type | Diffuser type | Voltage | Options/accessories |
|---|----------------------|-----------------------------------|--|--------------|---|
| DMS Damp location | 1 | 32 32W T8 (48") | (blank) Acrylic, 15% DR | MVOLT | GEB10IS T8 electronic ballast, instant start |
| DMSW Wet location | 2 | 48HO 60W 800mA (48") | AR High-impact acrylic, 50% DR | 347 | GEB10RS T8 electronic ballast, rapid start |
| For tandem double-length unit, add prefix T. Example: TDMS | 3¹ | 48T8HO 44W T8 (48") | DP Deep acrylic, 15% DR ² | | AL Aluminum housing |
| | Not included. | 96HO 110W 800mA (96") | ARDP High-impact deep acrylic, 50 DR ² | | WLF Field-installable wet location fittings to stem-hang DMS on ½" rigid conduit (2 per package). For factory-installed fittings on top, order WLF as an option. |
| | | 96T8 59W T8 slimline (96") | | | CSA CSA Certified |
| | | 96T8HO 86W T8 380mA (96") | | | NOM NOM Certified |

See page 113 for others.

NOTES:

- 1 3-lamp models only available with T8 lamp source.
- 2 Deep lens is standard on 4' slimline, HO (800mA) and 8' fixtures. To match deep appearance on 4' rapid start, order **DP** or **ARDP** option.

| Availability and Dimensions | | | | | | |
|-----------------------------|-------------------------|-------------------|--------------------|--------------------------------------|--|--|
| Series | Lamps per cross section | Lamps per fixture | Lamp type | Width in. (cm) | Depth in. (cm) | Length in. (cm) |
| DMS, DMSW | 1, 2, 3 ¹ | 1, 2, 3 | 32, 48HO, 48T8HO | 8 ⁵ / ₈ (20.9) | 5 ¹ / ₄ (13.3) 6 ¹ / ₈ (15.3) | 50 ⁵ / ₁₆ (129.4) 50 ⁵ / ₁₆ (129.4) |
| DMS, DMSW (DP or ARDP) | 1, 2, 3 ¹ | 1, 2, 3 | 32, 48HO, 48T8HO | 8 ⁵ / ₈ (20.9) | 6 ¹ / ₈ (15.3) | 50 ⁵ / ₁₆ (129.4) |
| TDMS, TDMSW | 1, 2, 3 ¹ | 2, 4, 6 | 32, 48HO, 48T8HO | 8 ⁵ / ₈ (20.9) | 6 ¹ / ₈ (15.3) | 98 ⁵ / ₁₆ (251.3) |
| DMS, DMSW | 1, 2 | 1, 2 | 96HO, 96T8, 96T8HO | 8 ⁵ / ₈ (20.9) | 6 ¹ / ₈ (15.3) | 98 ⁵ / ₁₆ (251.3) |

FEATURES & SPECIFICATIONS

INTENDED USE

Intended for low to medium mounting heights in dusty or dirty environments. Aluminum body (AL) option provides corrosion protection against moisture or humidity. High impact lenses available. Ideal for canopies, dock areas, refrigerated areas and other non-hazardous environments.

ATTRIBUTES

For unit or row installations, covered ceiling surface or suspended (damp only) mounting.

CONSTRUCTION

Welded steel or aluminum housing is fully gasketed and post-painted for corrosion resistance. Captive, corrosion resistant pivot latches secure the diffuser, six on 4' units and ten on 8' units. Cast zinc wet location fittings standard on DMSW for 1/2" rigid conduit entry.

FINISH

Painted parts pretreated with a five-stage iron-phosphate process to ensure superior paint adhesion and corrosion resistance, then finished with a high-gloss, baked white enamel.

OPTICAL SYSTEM

High-impact Acrylic diffuser with a stippled interior surface to spread lamp image.

ELECTRICAL SYSTEM

Thermally protected, resetting, Class P, HPF, non-PCB, UL listed, CSA certified ballast is standard. Sound rating depends on lamp/ballast combination. AWM, TFN or THHN wire used throughout, rated for required temperatures.

LISTING

UL listed (standard). CSA Certified (see Optiona). NOM Certified (see Options). UL listed and labeled for wet locations in covered ceiling applications.

Warranty

Guaranteed for one year against mechanical defects in manufacture.

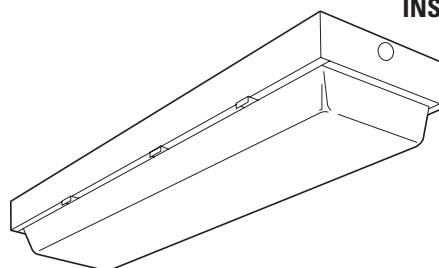
Enclosed and Gasketed Industrial

DMS/DMSW

INSTANT & RAPID START

4' length

1, 2 or 3 lamps



Specifications

| | |
|---------|-------------|
| Length: | 51 (1295) |
| Width: | 8-5/8 (219) |
| Depth: | 5-5/8 (143) |

All dimensions are inches (millimeters). Specifications subject to change without notice.

ORDERING INFORMATION

For shortest lead times, configure product using **standard options (shown in bold)**.

Example: DMSW 2 32 MVOLT GEB10IS

| Series | Lamps | Lamp Type | Diffuser | Voltage | Options |
|---|----------------|------------------------|--|--------------|--|
| DMS Damp location | 1 | 32 32W T8 (48") | (blank) High-impact acrylic(50% DR) | 120 | <u>Shipped installed in fixture</u> |
| DMSW Wet location | 2 | 96T8 59W T8 slimline | ARDP ² Deep high-impact acrylic(50% DR) | 277 | GEB10IS Electronic ballast(s) ≤10% THD, Instant start |
| For tandem double-length unit, add prefix T. Example: TDMS | 3 ¹ | | | 347 | GEB10RS Electronic ballasts, <10% THD, rapid start ³ |
| | | | | MVOLT | EL Emergency battery pack (nominal 300 lumens). See Life Safety Section ⁴ |
| | | | | | GLR Internal fast-blow fusing |
| | | | | | GMF Internal slow-blow fusing |
| | | | | | RIF1 Radio interference filter (one per fixture) |
| | | | | | AL Aluminum body |
| | | | | | WLF Wet location fittings (1 pair, installed in fixture top) |
| | | | | | CSA CSA Certified |
| | | | | | NOM NOM Certified |
| | | | | | BDP Ballast disconnect ⁶ |

Accessories⁵

Order as separate catalog numbers.

- SQ** Swivel-stem hanger (specify length in 2" increments). Hanging devices suitable for damp locations only.
- 1B** Ceiling spacer (adjusts from 1-1/2" to 2-1/2" from ceiling).
- BCD** Bracket for HC mounting. Two per package.
- HC36** Chain hangers (1 pair, 36" long)(Requires BCD).
- WLF** Wet location fittings (1 pair, not installed).

NOTES:

- 1 32W T8 lamps only.
- 2 Deep lens is standard on 8' fixtures.
- 3 Available only with 96T8 lamp types.
- 4 EL option only available on DMS fixture.
- 5 Hanging devices suitable for damp locations only.
- 6 Meets codes that require in-fixture disconnect

DMS Rapid Start

MOUNTING DATA

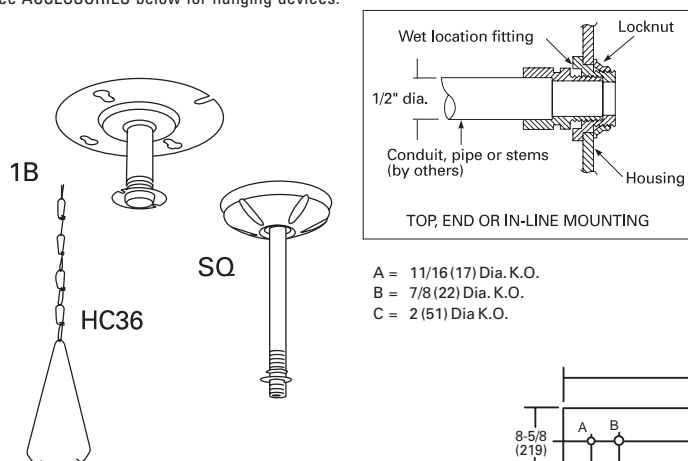
For unit or row installation, suspended mounting.

Unit installation — Minimum of two hangers required. Recommend 1/2" nipple with union (by others) for DMSW.

Row installation — One hanger per channel plus one per row required. Recommended 1/2" nipple with union (by others) for DMSW.

DMSW — Includes gasketed wet location fittings on ends for power feeding/mounting. Fitting is threaded for 1/2" rigid conduit. No KO's or mounting holes provided. Drill mounting holes and attach to surface using fasteners and sealing washers (by others) appropriate to ceiling material

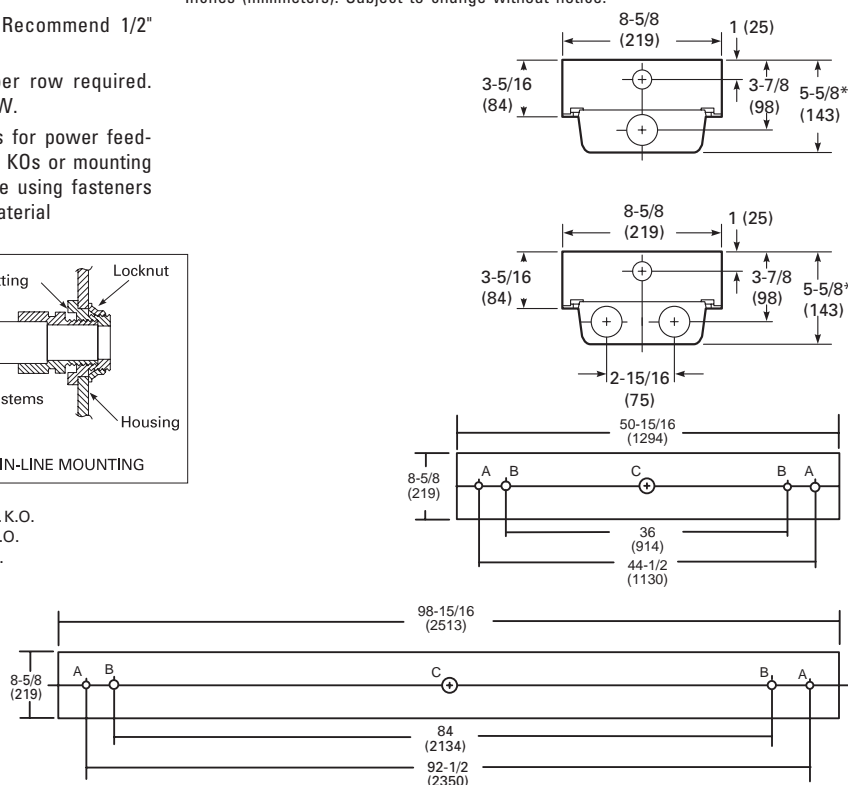
See ACCESSORIES below for hanging devices.



A = 11/16 (17) Dia. K.O.
B = 7/8 (22) Dia. K.O.
C = 2 (51) Dia K.O.

DIMENSIONS

Inches (millimeters). Subject to change without notice.



PHOTOMETRICS

Calculated using the zonal cavity method in accordance with IESNA LM41 procedures. Floor reflectances are 20%. Lamp configurations shown are typical. Full photometric data on these and other configurations available upon request.

DMS 2 32

Report: L5816

LUMENS PER LAMP: 2900

Luminaire Efficiency: 79.2%

Coefficients of Utilization

| pc | 80% | | | 50% | | | 30% | | |
|----|-----|-----|-----|-----|-----|-----|-----|-----|-----|
| | 70% | 50% | 30% | 50% | 30% | 10% | 50% | 30% | 10% |
| 0 | 93 | 93 | 93 | 85 | 85 | 85 | 81 | 81 | 81 |
| 1 | 83 | 78 | 74 | 72 | 69 | 66 | 68 | 65 | 63 |
| 2 | 75 | 67 | 61 | 62 | 57 | 53 | 58 | 54 | 51 |
| 3 | 68 | 59 | 51 | 54 | 48 | 43 | 51 | 46 | 42 |
| 4 | 62 | 51 | 44 | 47 | 41 | 37 | 45 | 40 | 35 |
| 5 | 57 | 46 | 38 | 42 | 36 | 31 | 40 | 35 | 30 |
| 6 | 52 | 41 | 33 | 38 | 32 | 27 | 36 | 31 | 26 |
| 7 | 48 | 37 | 30 | 34 | 28 | 24 | 33 | 27 | 23 |
| 8 | 45 | 34 | 27 | 31 | 25 | 21 | 30 | 25 | 21 |
| 9 | 42 | 31 | 24 | 29 | 23 | 19 | 28 | 22 | 19 |
| 10 | 39 | 28 | 22 | 27 | 21 | 17 | 25 | 20 | 17 |

Zonal Lumen Summary

| Zone | Lumens | % Lamp | % Fixture |
|------------|--------|--------|-----------|
| 0° - 30° | 951 | 16.4 | 20.7 |
| 0° - 40° | 1607 | 27.7 | 35.0 |
| 0° - 60° | 3005 | 51.8 | 65.4 |
| 0° - 90° | 4311 | 74.3 | 93.8 |
| 90° - 180° | 286 | 4.9 | 6.2 |
| 0° - 180° | 4596 | 79.2 | 100.0 |