

## PRODUCT INFORMATION

General Purpose

## Intended Use

The industry's next generation in linear direct fluorescent products. This new compact, low-profile design offers our customers unique product features which improve the overall installation process and appearance while reducing labor costs, making it the most versatile solution for commercial, retail, manufacturing, warehouse, cove, and display applications.

Designed exclusively for use with T5 and T5HO lamp types. The channel offers gripper-back feature, which strengthens the overall

construction and allows for the use of the new Z spring hanger (see accessories on pages 92-93).

Patent-pending fastener-less channel cover offers a secure-fit design, allowing for quick attachment and easy access.

## Construction

Compact-design channel and cover are formed from code-gauge cold-rolled steel. Locking lamp holder tracks bolster strength while creating improved lamp stability. Socket offers rotating collar and enclosed contacts. Improved easy "snap n' lock" end plates allow for

quick attachment.

Finish: High-gloss, baked white enamel finish (white standard). Five-stage iron-phosphate pretreatment ensures superior paint adhesion and rust resistance. Finish options; black (MB), smoke gray (SMG) and galvanized (GALV).

## Optics

Reflector options include solid or uplight designs in both symmetric and asymmetric configurations. See pages 94-95 for reflector configuration.

## Electrical

Thermally protected, resetting, Class P, HPF, non-PCB,

UL Listed. Suitable for damp locations. AWN, TFN or THHN wire used throughout, rated for required temperatures.

Ballast disconnect provided standard where required to comply with U.S. and Canadian electrical codes.

## Installation

Patented-pending three-point row aligner locks channel together for straighter and faster row mounting, included as standard. Ideal for surface-mount or suspended.

## Listings

UL Listed. CUL Listed or CSA Certified to Canadian standards. NOM Certified—optional.

Z

## Low-Profile T5 Striplight



## ORDERING INFORMATION

For shortest lead times, configure products using **bolded options**.

Example: Z 1 54T5HO Z5SMR46 MVOLT GEB10PS

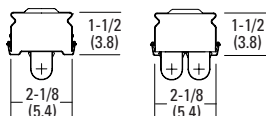
Series <sup>1,2</sup>	Number of lamps	Lamp type	Reflector	Distribution	Voltage
Z Low-profile strip	1	14T5 14W T5 (22")	(blank) No reflector	(blank) Solid	MVOLT
	2	21T5 21W T5 (34")	Z5ASR46 46" asymmetric reflector	A8 Apertured 8% uplight	120
	Not included.	24T5HO 24W T5HO (22")	Z5SMR46 46" symmetric reflector	A5 Apertured 5% uplight	277
		28T5 28W T5 (46")		A4 Apertured 4% uplight <sup>8</sup>	347 <sup>3,4</sup>
		39T5HO 39W T5HO (34")		A2 Apertured 2% uplight <sup>8</sup>	
		54T5HO 54W T5HO (46")			
Ballast		Options			
GEB10PS	T5 electronic ballast, ≤10% THD, programmed rapid start	EL55	Emergency battery pack (nominal 390-700 lumens) <sup>6</sup>	Finish	
S5	SIMPLY5™ (.95 BF) <sup>5</sup>	EL65	Emergency battery pack (nominal 725-1325 lumens) <sup>6</sup>	(blank)	White-gold
S5115	SIMPLY5™ (1.15 BF) <sup>5</sup>	PLF	Plug-in wiring; specify 1, 2 or 3 branch circuits and hot wires (A = black, B = red, C = blue, AB or AC)	MB	Matte black
		TILW	Tandem in-line wiring	GALV	Galvanized
		CSA	Meets Canadian standards	SKGY	Smoke gray
		NOM	Meets Mexican standards	SSR	Specular <sup>7</sup>

## ADDITIONAL INFORMATION

For additional product information, visit [www.lithonia.com](http://www.lithonia.com).

ACCESSORIES	
ORDER SEPARATELY	
SQ	Swivel-stem hanger (specify length in 2" increments)
ZSPRG	Tong and T-grid hanger
WGZ46	46" wireguard, white, light gauge
WGZ5SMR46	46" wireguard, white, for symmetric reflector
WGZ5ASR46	46" wireguard, white, for asymmetric reflector
MSSACF	Adjustable aircraft cable system with power feed (specify length as 36, 72 or 108 inches)
MSSAC	Adjustable aircraft cable system (specify length as 36, 72 or 108 inches)

Drawings are for dimensional detail only and may not represent actual mechanical configuration. Dimensions are shown in inches (centimeters) unless otherwise noted.



## Notes

- Available in multiple lengths. Consult factory.
- For tandem double-length unit, add prefix T. Example: TZ
- Available only with 28T5 and 54T5HO.
- Available only with CSA option.
- SIMPLY5™ system includes a 13' 55SSC RELOC® wiring system.
- Specify voltage.
- Specular finish in reflector only.
- Asymmetric reflector only.

## FEATURES & SPECIFICATIONS

**INTENDED USE** — The industry's next generation in linear direct fluorescent products. This new compact, low-profile design offers our customers unique product features which improve the overall installation process and appearance while reducing labor cost, making it the most versatile solution for commercial, retail, manufacturing, warehouse, and cove and display applications.

**ATTRIBUTES** — Designed to accommodate a wide variety of T5 and T5HO lamp lengths. Channel offers the gripper back feature which strengthens the overall construction and allows for the use of the Z spring hanger (see back). Patent-pending fastener-less channel cover offers a secure fit design allowing for quick attachment and easy access without pinching wires.

**CONSTRUCTION** — Compact designed channel and cover are formed from code-gauge cold-rolled steel. Locking lamp holder tracks bolsters strength of the overall strip construction while creating improved lamp stability. Design includes T5 socket, features rotating collar and enclosed contacts. Improved easy "snap n' lock" end plates allow for quick attachment. Patent-pending "three-point" row connector locks channel together for straighter and faster rows mounting; included as standard.

**FINISH** — High-gloss, baked white enamel finish (white standard). Five-stage iron-phosphate pretreatment ensures superior paint adhesion and rust resistance. Other channel paint finish options: black (MB), smoke gray (SKGY) and galvanized (GALV).

**OPTICAL** — Reflector options include solid or apertured designs in both symmetric and asymmetric configurations. Consult factory for special-apertured versions.

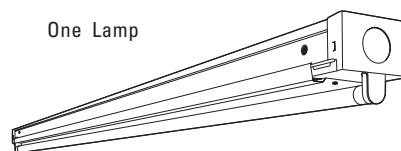
**ELECTRICAL SYSTEM** — Thermally protected, resetting, Class P, HPF, non-PCB, UL listed.

Suitable for damp locations. AWN, TFN or THHN wire used throughout, rated for required temperatures.

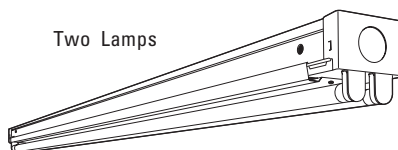
**INSTALLATION** — Patented-pending "three-point" row connector locks channels together for straighter and faster rows mounting; included as standard. Ideal for surface-mount or suspended.



Low-Profile T5 Striplight



One Lamp

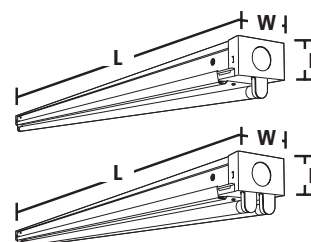


Two Lamps

Linear Lamps  
1 or 2 Lamps

### Specifications

Length: 22-3/8 (56.8), 34-1/8 (86.7),  
46 (116.8) or 92 (233.7)  
Width: 2-1/8 (5.4)  
Depth: 1-1/2 (3.8)  
Weight: 7.1 lbs (3.2 kg)  
All dimensions are inches (centimeters).



**LISTING** — UL Listed, CUL Listed or CSA Certified to Canadian Standards.

**WARRANTY** — Guaranteed for one year against mechanical defects in manufacture.

## ORDERING INFORMATION

For shortest lead times, configure product using **standard options (shown in bold)**.

Example: Z 1 54T5HO Z5SMR46 MVOLT GEB10PS

Series	Number of lamps	Lamp type	Configuration	Voltage	Options
<b>Z Compact T5</b>	<b>1</b>	14T5 14W T5 (22")	(blank) <b>No reflector</b>	<b>MVOLT<sup>2</sup></b>	<b>GEB10PS Electronic ballast, ≤10% THD, program start</b>
	<b>2</b>	21T5 21W T5 (34")	Z5ASR46 46" asymmetric reflector	120	OS10PS OSRAM® electronic ballast, ≤10% THD, program start
For tandem double-length unit, add prefix T. <sup>1</sup> Example: TZ	Not included.	24T5HO 24W T5 HO (22")	Z5SMR46 46" symmetric reflector	277	S5 0.95 ballast factor SIMPLY5™ system <sup>4</sup>
		<b>28T5 28W T5 (46")</b>	Other lengths available. See Accessories.	347 <sup>1</sup>	S5115 1.15 ballast factor SIMPLY5™ system <sup>4</sup>
		39T5HO 39W T5 HO (34")		Others available.	GLR Internal fast-blow fuse <sup>4</sup>
		<b>54T5HO 54W T5 HO (46")</b>			GMF Internal slow-blow fuse <sup>4</sup>
					PLF Plug-in wiring, specify 1, 2 or 3 branch circuits and hot wires (A=black, B=red, C=blue, AB or AC)
					TILW Tandem in-line wiring
					EL55 Emergency battery pack (nominal 390-700 lumens; consult factory for additional battery packs <sup>5</sup> )
					EL65 Emergency battery pack (nominal 725-1325 lumens) <sup>5</sup>
					CSA CSA Certified <sup>8</sup>

Paint finish	Reflector type
(blank) <b>White</b>	(blank) <b>Solid</b>
MB Matte black	
GALV Galvanized	
SKGY Smoke gray	

**Accessories**

Order as separate catalog numbers.

SQ\_ Swivel-stem hanger (specify length in 2" increments)

ZSPRG Tong and T-grid hanger

Z5SMR46 Symmetric reflector, 46" white

Z5ASR46 Asymmetric reflector, 46" white

Z5SMR34 Symmetric reflector, 34" white

Z5ASR34 Asymmetric reflector, 34" white

Z5SMR22 Symmetric reflector, 22" white

Z5ASR22 Asymmetric reflector, 22" white

WGZ46 46" wireguard, white

WGZ5SMR46 46" wireguard, white, for symmetric reflector

WGZ5ASR46 46" wireguard, white, for asymmetric reflector

MS5ACF\_ Adjustable aircraft cable system with power feed (specify length as 36, 72 or 108 inches)

MS5AC\_ Adjustable aircraft cable system (specify 36, 72 or 108 inches)

**NOTES:**

1 Only available with 28W and 54W.

2 MVOLT (120-277V), 50-60HZ

3 Specify voltage.

4 SIMPLY5 system includes a 13' S5SSC RELOC® wiring system. Specify voltage unless hardwire (HW) or PWS is ordered.

5 Available with 4' and 8' lengths only.

6 120-277V only for power feed.

7 Standard wire size for power feed is 18 gauge. For 12 gauge add **12AWG** to the end of catalog number. Consult factory for length of runs and required wire size.

8 347V only.

## Z T5 Compact Striplight

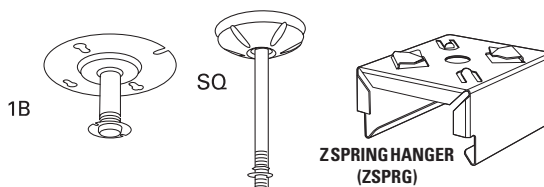
## MOUNTING DATA

For unit or row installation, surface or stem mounting.

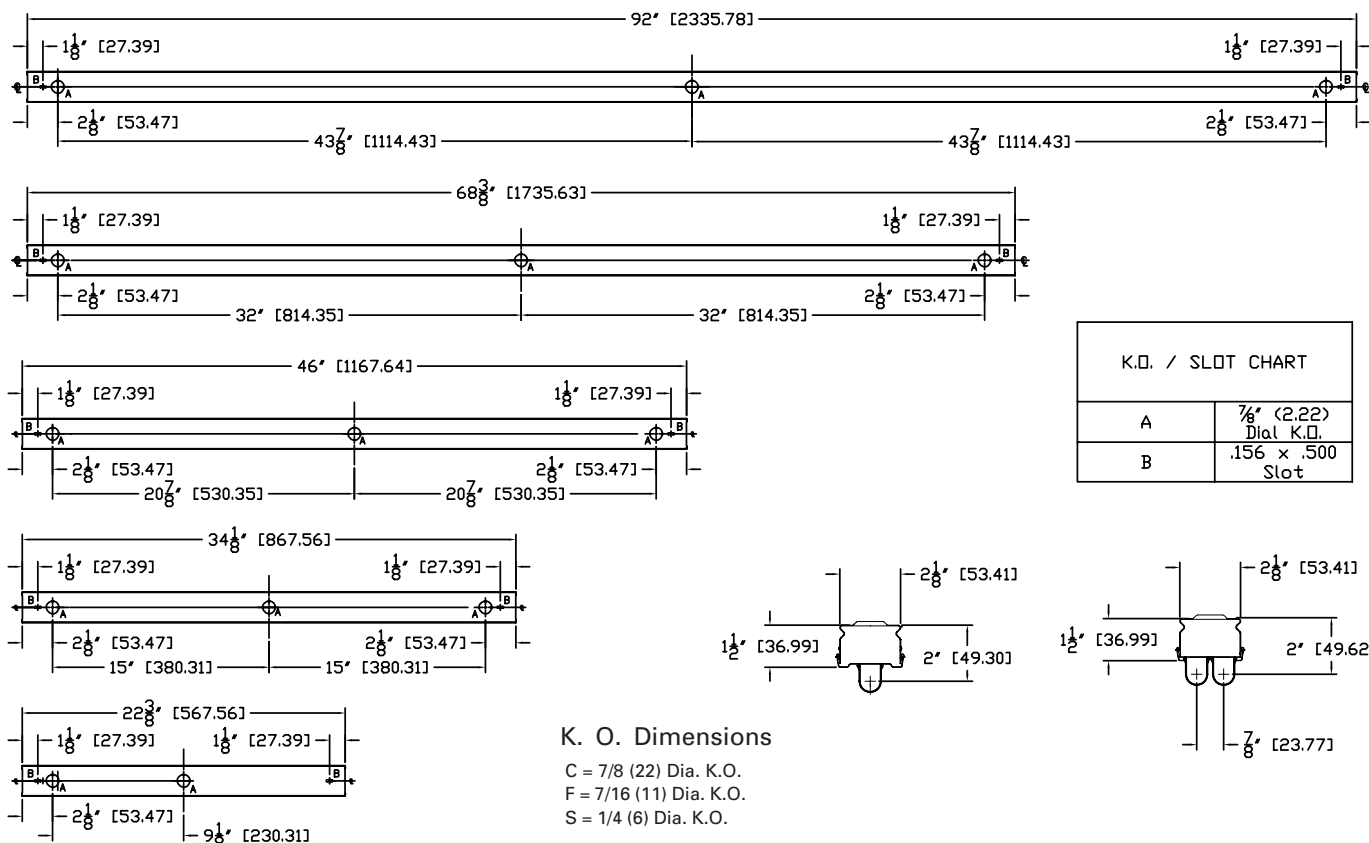
Unit installation — Minimum of two hangers required.

Row installation — One hanger per channel plus one per row required.

Hanging devices illustrated.



## DIMENSIONS



## PHOTOMETRICS

Calculated using the zonal cavity method in accordance with IESNA LM41 procedure. Floor reflectances are 20%. Lamp configurations shown are typical. All data based on 25°C. Full photometric data on these and other configurations available upon request.

TEST NO.: LTL17094

LUMINAIRE CATALOG NO.: Z 1 28T5 MVOLT GEB10PS

LUMENS PER LAMP: 2730

Cofficients of Utilization	20%			50%		
	80%			70%		
	50%	30%	10%	50%	30%	10%
0	115	115	115	110	110	110
1	94	89	83	90	85	81
2	80	72	65	77	69	63
3	69	60	52	66	58	51
4	60	51	43	58	49	42
5	54	44	37	51	42	36
6	48	38	31	46	37	31
7	43	34	27	41	33	27
8	39	30	24	38	29	24
9	36	27	21	34	26	21
10	33	25	19	32	24	19

Zonal Lumen Summary

Zone	Lumens	% Lamp	% Fixture
0° - 30°	428.3	15.7	15.7
0° - 40°	723.9	26.5	26.6
0° - 60°	1398.5	51.2	51.4
0° - 90°	2278.6	83.5	83.7
90° - 180°	443.9	16.3	16.3
0° - 180°	2722.4	99.7	100.0

TEST NO.: LTL17092

LUMINAIRE CATALOG NO.: Z 1 54T5HO MVOLT GEB10PS

LUMENS PER LAMP: 4450

Cofficients of Utilization	20%			50%		
	80%			70%		
	50%	30%	10%	50%	30%	10%
0	109	109	109	106	106	106
1	92	87	83	89	85	81
2	79	72	66	76	70	64
3	68	60	53	66	59	52
4	60	51	44	58	50	44
5	53	44	38	52	43	37
6	48	39	32	46	38	32
7	43	34	28	42	34	28
8	39	31	25	38	30	25
9	36	28	22	35	27	22
10	33	25	20	32	25	20

Zonal Lumen Summary

Zone	Lumens	% Lamp	% Fixture
0° - 30°	809.8	18.2	19.5
0° - 40°	1366.0	30.7	32.9
0° - 60°	2625.8	59.0	63.2
0° - 90°	3806.5	85.5	91.6
90° - 180°	347.8	7.8	8.4
0° - 180°	4154.3	93.4	100.0

TEST NO.: LTL17070

LUMINAIRE CATALOG NO.: Z 2 54T5HO MVOLT GEB10PS

LUMENS PER LAMP: 4450

Cofficients of Utilization	20%			50%		
	80%			70%		
	50%	30%	10%	50%	30%	10%
0	119	119	119	115	115	115
1	99	93	88	95	90	85
2	84	76	69	81	73	67
3	73	63	56	70	61	54
4	64	54	46	61	52	45
5	56	46	39	54	45	38
6	50	40	33	48	39	32
7	45	36	29	44	35	28
8	41	32	25	39	31	25
9	37	28	22	36	28	22
10	34	26	20	33	25	20

Zonal Lumen Summary

Zone	Lumens	% Lamp	% Fixture
0° - 30°	1451.4	16.3	15.8
0° - 40°	2517.9	28.3	27.4
0° - 60°	5023.5	56.4	54.7
0° - 90°	7793.5	87.6	84.8
90° - 180°	1392.3	15.6	15.2
0° - 180°	9185.9	103.2	100.0