

## 8" CFL Vertical, Compact Fluorescent Downlighting



8VF Baffle



8VF Open



8VF Wallwash



8VF Wet Lens

### 8VF Series

8" CFL Vertical (Light Line)

#### Intended Use

Ideal for a wide variety of low- to medium-height ceiling applications including commercial, retail and hospitality spaces where **baffle**, **open**, **wallwash**, or wet-location **lensed** reflectors are required.

#### Construction

Recessed frame-in rated Non-IC for new construction or remodel applications. Approved for all ceiling and wiring types. Galvanized steel mounting frame with mechanical trim retention (clips) ensures secure and flush reflector mounting to ceiling. Mounting frame has cutout section for remodel applications when installation from below is necessary. Galvanized bar hangers span up to 24" o.c. and feature built-in T-bar clips and nailers for T-bar or wood joist installation. Frames equipped with galvanized junction box UL Listed for through wire applications.

Maximum 1-1/2" ceiling thickness.

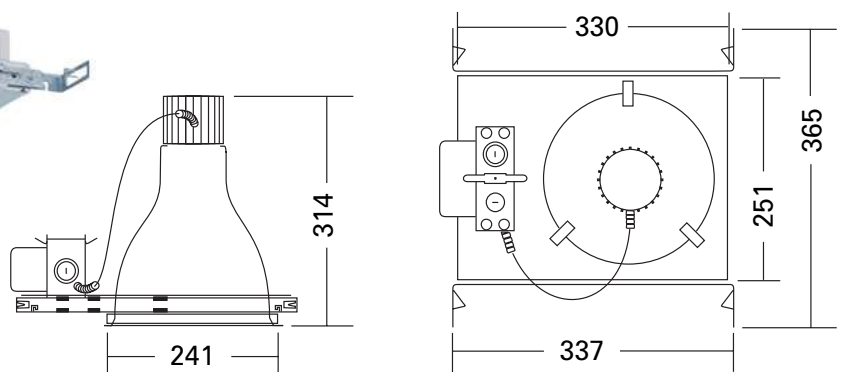
Utilizes an extruded socket housing that attaches to the reflector via key hole mount, which provides superior heat dissipation and extended lamp life. Socket housing also adjusts to accommodate varying lamp lengths.

#### Electrical

Electronic ballast with end of life protection standard. Class P thermally protected ballast that protects against improper contact with insulation. Minimum starting temperature is 0°F/-18°C. Rated for #12 AWG conductor thru-branch wiring. Minimum 90° supply wire. Ground wire provided.

#### Available Reflector Options

See Documentation.



Technical Data are Subject to Change without Notice. Dimensions in mm.

#### Dimensional Specifications

**Max. Height:** 12-3/8 inches (314 mm)  
**Ceiling Opening:** 8-7/8 inches (225 mm)  
**Overlap Trim:** 9-1/2 inches (241 mm)  
**Length:** 13-1/4 inches (337 mm)  
**Width:** 14-3/8 inches (365 mm)

## FEATURES & SPECIFICATIONS

### INTENDED USE

Ideal for a wide variety of low- to medium-height ceiling applications including commercial, retail and hospitality spaces where a baffled fixture is required.

### CONSTRUCTION

Galvanized steel mounting frame with mechanical trim retention (clips) ensures secure and flush reflector mounting to ceiling. Mounting frame has cutout section for remodel applications when installation from below is necessary.

Galvanized bar hangers span up to 24" o.c. and feature built-in T-bar clips and nailers for T-bar or wood joist installation.

Frames equipped with galvanized junction box UL Listed for through wire applications.

Maximum 1-1/2" ceiling thickness.

### OPTICS

Aluminum full reflectors are optically designed to maximize lumen output and to provide superior glare control. The black or white baffled reflectors have a semi-specular upper finish with a white painted flange standard.

### ELECTRICAL

Electronic ballast with end of lamp life protection standard. Class P thermally protected ballast protects against improper contact with insulation. Minimum starting temperature is 0°F/-18°C.

Rated for #12 AWG conductor thru-branch wiring. Minimum 90° supply wire. Ground wire provided.

### Lamp Socket Base:

DTT 4-pin lamps – 18W (G24Q-2); 26W (G24Q-3)

TRT 4-pin lamps – 18W (GX24Q-2); 26W & 32W (GX24Q-3); 42W (GX24Q-4); 57W (GX24Q-5)

### LISTING

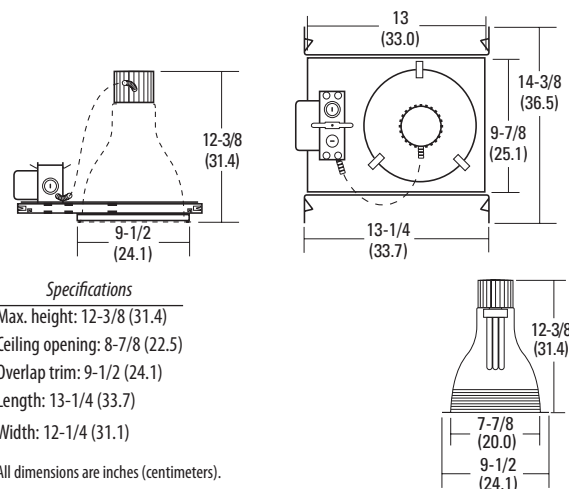
Fixtures are UL Listed for thru-branch wiring, Non-IC recessed mounting, damp location, and to U.S. and Canadian Safety Standards.

## Compact Fluorescent Downlighting

# 8" 8VF

### BAFFLE

Vertical 1-Lamp, Double Twin-Tube (DTT) or Triple-Tube (TRT)



### Specifications

Max. height: 12-3/8 (31.4)

Ceiling opening: 8-7/8 (22.5)

Overlap trim: 9-1/2 (24.1)

Length: 13-1/4 (33.7)

Width: 12-1/4 (31.1)

All dimensions are inches (centimeters).

### ORDERING INFORMATION

For shortest lead times, configure products using **bolded options**.

### 8VF

**Example: 8VF 26-42TRT 8B3 MVOLT**

Series	Wattage/Lamp	Reflector <sup>6</sup>	Voltage	Options
<b>8VF</b>	18DTT	<b>8B3 Black baffle</b>	<b>MVOLT<sup>1</sup></b>	ADEZ Advance Mark 10™ electronic dimming ballast, 120V or 277V. Minimum dimming level 5%. Must be voltage specific.
	26DTT	<b>8B3W White baffle</b>	120	DMHL Lutron Compact SE™ electronic dimming ballast, 120V or 277V. Minimum dimming level 5%. Must be wattage and voltage specific.
	18TRT		277	
	<b>1/26-42TRT<sup>1</sup></b>		347 <sup>5</sup>	<b>EL Emergency PSDL3 DL battery pack with integral test switch<sup>6</sup></b>
	26TRT			<b>ELR Emergency PSDL3 DL battery pack with remote test switch<sup>6</sup></b>
	32TRT			ELHL OTA I-420-R high lumen output emergency battery pack. Integral test switch provided. Maximum average lumen output 1300 (42W). <sup>7</sup>
	42TRT			ELRHL IOTA I-420-EM-B high lumen output emergency battery pack. Remote test switch provided. Maximum average lumen output 1300 (42W). <sup>7</sup>
	57TRT <sup>2</sup>			GMF Single slow-blow fuse, must specify voltage
				BDP Ballast disconnect plug (meets codes that require in-fixture disconnect) <sup>5</sup>
				WLP 35K lamp (shipped separately)
				RIF1 Radio interference filter

### Notes

1 Not available with DMHL or WLP.

2 Not available with 347V, DMHL, EL or ELR.

3 White painted flange standard.

4 Electronic multi-volt ballast capable of operating any line voltage from 120-277V, 50 or 60Hz.

5 Not available with EL or ELR.

6 Add 3" (7.6) to width and 4-1/2" (11.4) to length.

7 Not recommended for field installation.

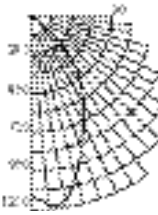
8 For additional options pls. contact us.

**Accessories:** Order as separate catalog number.

SCA8 Sloped ceiling adaptor. Degree of slope must be specified (10D, 15D, 20D, 25D, 30D) Ex: SCA8 10D.

CTE8 Ceiling thickness extender is used when ceiling thickness is greater than 1-1/2 (3.8). Maximum thickness 2 (5.1).

### 8" 8VF Vertical 1-Lamp, Double Twin-Tube (DTT) or Triple Tube (TRT), Baffle

Distribution Curve	Distribution Data		Output Data		Coefficient of Utilization				Illuminance Data at 30" Above Floor for a Single Luminaire							
	From 0°	cp.	Zone	Lumens	%lamp	rf	rc									
	0°	1101														
	5°	1167	0°-30°	734	30.6	1										
	15°	1026	0°-40°	1053.1	43.9	2										
	25°	733	0°-60°	1237.5	51.6	3										
	35°	513	0°-90°	1241.7	51.7	4										
	45°	235	90°-180°	0	0.0	5										
	55°	5	0°-180°	1241.7	51.7*	6										
	65°	2														
	75°	1														
	85°	1														
	90°	0														
						rw	50%		30%	50%	30%	50%	30%			
						0	.62	.62	.60	.60	.57	.57				
						1	.57	.56	.56	.55	.54	.53				
						2	.53	.50	.52	.50	.50	.48				
						3	.49	.46	.48	.45	.47	.45				
						4	.45	.42	.45	.42	.43	.41				
						5	.42	.39	.24	.38	.41	.38				
						6	.39	.36	.39	.36	.38	.35				
						7	.36	.33	.36	.33	.35	.33				
						8	.34	.31	.34	.31	.33	.30				
						9	.32	.29	.32	.29	.31	.28				
						10	.30	.27	.30	.27	.29	.26				
						Mount height	Initial fc at beam center	Beam diameter		fc at beam edge		Beam diameter		fc at beam edge		
						8'	36.4	5.1'		18.2		10.5'		3.6		
						10'	19.6	6.9'		9.8		14.3'		2.0		
						12'	12.2	8.8'		6.1		18.1'		1.2		
						14'	8.3	10.7'		4.2		21.9'		0.8		
						16'	6.0	12.5'		3.0		25.7'		0.6		

## FEATURES &amp; SPECIFICATIONS

## INTENDED USE

Ideal for a wide variety of low- to medium-height ceiling applications including commercial, retail and hospitality spaces where an open or damp location lensed fixture is required.

## CONSTRUCTION

Galvanized steel mounting frame with mechanical trim retention (clips) ensures secure and flush reflector mounting to ceiling. Mounting frame has cutout section for remodel applications when installation from below is necessary.

Galvanized bar hangers span up to 24" o.c. and feature built-in T-bar clips and nailers for T-bar or wood joist installation.

Frames equipped with galvanized junction box UL Listed for through wire applications.

Maximum 1-1/2" ceiling thickness.

## OPTICS

Aluminum full reflectors are optically designed to maximize lumen output and to provide superior glare control. Anodized finishes for open reflectors are semi-specular or diffuse in a variety of colors. Polyester powder coat finishes also are available in white.

Lenses are available in clear flat glass, tempered prismatic glass or polycarbonate to provide optimal visual comfort and improved aesthetics. Lens is recessed 2-1/4 (5.7) from flange.

## ELECTRICAL

Electronic ballast with end of lamp life protection standard. Class P thermally protected ballast protects against improper contact with insulation. Minimum starting temperature is 0°F/-18°C.

Rated for #12 AWG conductor thru-branch wiring. Minimum 90° supply wire. Ground wire provided.

## Lamp Socket Base:

DTT 4-pin lamps – 18W (G24Q-2); 26W (G24Q-3)

TRT 4-pin lamps – 18W (GX24Q-2); 26W & 32W (GX24Q-3); 42W (GX24Q-4); 57W (GX24Q-5)

## LISTING

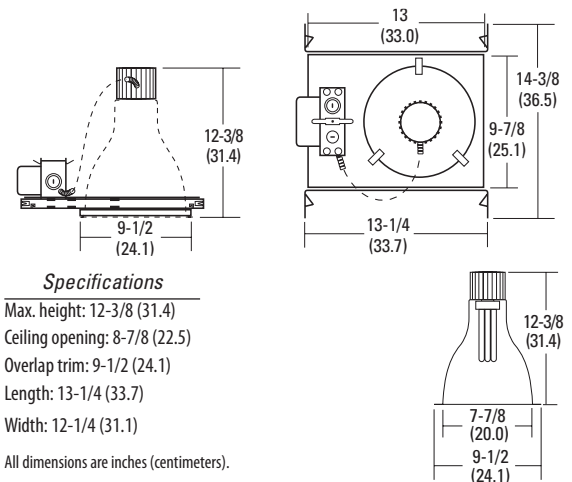
Fixtures are UL Listed for thru-branch wiring, Non-IC recessed mounting, damp location, and to U.S. and Canadian Safety Standards.

## Compact Fluorescent Downlighting

8" 8VF

## OPEN REFLECTOR

Vertical 1-Lamp, Double Twin-Tube (DTT) or Triple-Tube (TRT)



## Specifications

Max. height: 12-3/8 (31.4)

Ceiling opening: 9-7/8 (25.1)

Overlap trim: 9-1/2 (24.1)

Length: 13-1/4 (33.7)

Width: 12-1/4 (31.1)

All dimensions are inches (centimeters).

## ORDERING INFORMATION

For shortest lead times, configure products using **bolded options**.

## 8VF

**Example: 8VF 26-42TRT 802AZ MVOLT**

Series	Wattage/Lamp	Reflector/Color	Lens type	Voltage	Options <sup>7</sup>
8VF	18DTT	802 White open	(blank) Gold diffuse open	MVOLT <sup>2</sup>	ADEZ Advance Mark 10™ electronic dimming ballast, 120V or 277V. Minimum dimming level 5%. Must be voltage specific.
	26DTT	<b>802A Clear diffuse open</b>	CGL Clear glass lens	120	DMHL Lutron Compact SE™ electronic dimming ballast, 120V or 277V. Minimum dimming level 5%. Must be wattage and voltage specific.
	18DTT	<b>802AZ Clear semi-specular open</b>	T73 Tempered glass prismatic lens	277	<b>EL Emergency PSDL3 DL battery pack with integral test switch<sup>5</sup></b>
	<b>26-42TRT<sup>1</sup></b>	<b>802G Gold diffuse open</b>	PCL Clear polycarbonate lens	347 <sup>3</sup>	<b>ELR Emergency PSDL3 DL battery pack with remote test switch<sup>5</sup></b>
	26TRT	802G Gold diffuse open	PCL Clear polycarbonate lens		ELHL OTA I-420-R high lumen output emergency battery pack. Integral test switch provided. Maximum average lumen output 1300 (42W). <sup>6</sup>
	32TRT	802GZ Gold semi-specular open			ELRHL IOTA I-420-EM-B high lumen output emergency battery pack. Remote test switch provided. Maximum average lumen output 1300 (42W). <sup>6</sup>
	42TRT	802PR Pewter diffuse open			GMF Single slow-blow fuse, must specify voltage
	57TRT <sup>2</sup>	802WTZ Wheat semi-specular open			BDP Ballast disconnect plug (meets codes that require in-fixture disconnect) <sup>4</sup>
					WLP 35K lamp (shipped separately)
					TRW White flange
					RIF1 Radio interference filter

## Notes

- Not available with DMHL or WLP.
- Not available with 347V, DMHL, EL or ELR.
- Electronic multi-volt ballast capable of operating any line voltage from 120-277V, 50 or 60Hz.
- Not available with EL or ELR.
- Add 3" (7.6) to width and 4-1/2" (11.4) to length.

<sup>6</sup> Not recommended for field installation.

<sup>7</sup> For additional options pls. contact us.


## Accessories: Order as separate catalog number.

SCA8	Sloped ceiling adaptor. Degree of slope must be specified (10D, 15D, 20D, 25D, 30D) Ex: SCA8 10D.
CTE8	Ceiling thickness extender is used when ceiling thickness is greater than 1-1/2 (3.8). Maximum thickness 2 (5.1).

## 8" 8VF Vertical 1-Lamp, Double Twin-Tube (DTT) or Triple Tube (TRT), Open

Distribution Curve	Distribution Data	Output Data	Coefficient of Utilization	Illuminance Data at 30" Above Floor for a Single Luminaire
--------------------	-------------------	-------------	----------------------------	--

**8VF 42TRT 802AZ MVOLT**, (1) 42W TRT lamp, .96 s/mh, 3200 rated lumens, test no. LTL9815

	From 0°	cp.	Zone	Lumens	%lamp	rf	20%						Mount height	Initial fc at beam center	50%		10%							
	rw	50%	30%	50%	30%	50%	30%	Beam angle 51.2°		Beam angle 92.6°														
								Beam diameter	fc at beam edge	Beam diameter	fc at beam edge													
0°	1328	0°-30°	900	28.1	0	.66	.66	.65	.65	.62	.62	8'	43.9	5.3'	22.0	11.5'	4.4							
5°	1399	0°-40°	1339	41.8	1	.61	.60	.60	.59	.58	.57	10'	23.6	7.2'	11.8	15.7'	2.4							
15°	1224	0°-60°	1783	55.7	2	.56	.53	.55	.53	.53	.51	12'	14.7	9.1'	7.4	19.9'	1.5							
25°	919	0°-90°	1787	55.8	3	.51	.48	.51	.48	.49	.47	14'	10.0	11.0'	5.0	21.1'	1.0							
35°	709	90°-180°	0	0.0	4	.47	.44	.46	.43	.45	.42	16'	7.3	12.9'	3.6	28.3'	0.7							
45°	435					0°-180°	1787	55.8*	5	.46	.40							.43	.39	.42	.39			
55°	111									* Efficiency	6							.40	.36	.40	.36	.39	.35	
65°	2																	7	.37	.33	.37	.33	.36	.33
75°	1																		8	.34	.31	.34	.30	.33
85°	0	9	.32	.28	.32							.28	.31	.28										
90°	0		10	.30	.26	.30	.26	.29	.26															

**8VF 32TRT 802A CGL MVOLT**, (1) 32W TRT Lamp, 2400 rated lumens per lamp, 0.9 s/mh, test no. LTL15086

	0°	Zone	Lumens	% Lamp
0°	1107	0° - 30°	665	27.7
5°	1144	0° - 40°	990	41.2
15°	994	0° - 60°	1218	50.8
25°	739	0° - 90°	1227	51.1
35°	577	90° - 180°	0	0.0
45°	357	0° - 180°	1227	51.1
55°	27			
65°	8			
75°	2			
85°	0			
90°	0			

Efficiency: 51.1%
-------------------

pf	20%				
pc	80%		70%		50%
pw	50%	30%	50%	30%	50%
0	61	61	59	59	57
1	56	55	55	54	53
2	52	49	51	49	49
3	48	45	47	44	46
4	44	41	43	40	42
5	41	37	40	37	39
6	38	34	37	34	36
7	35	32	35	31	34
8	33	29	32	29	32
9	30	27	30	27	30
10	29	25	28	25	28

Task Height: 2.5ft.

50% beam - 10% beam

46.0° - 88.4°

Initial fc

Mtg

Center

Ht	Beam	Diameter	fc	Diameter	fc
8	36.6	5	18	11	4
10	19.7	6	10	15	2
12	12.3	8	6	18	1
14	8.4	10	4	22	1
16	6.1	11	3	26	1

**8VF 32TRT 802A T73 MVOLT**, (1) 32W TRT Lamp, 2400 rated lumens per lamp, 0.9 s/mh, test no. LTL15087

	90°	0°	Zone	Lumens	% Lamp	pf	20%						Task Height: 2.5ft. 50% beam - 10% beam 49.9° - 84.3°	
	70°	0°	971	0° - 30°	612	25.5	pc	80%		70%		50%		
	60°	5°	969	0° - 40°	857	35.7	pw	50%	30%	50%	30%	50%		30%
	50°	15°	867	0° - 60°	1098	45.8	0	57	57	56	56	53		53
	40°	25°	713	0° - 90°	1155	48.1	1	52	51	51	50	49		48
	30°	35°	456	90° - 180°	0	0.0	2	48	45	47	45	45		44
	20°	45°	222	0° - 180°	1155	48.1	3	44	41	43	40	42		39
	10°	55°	108	Efficiency: 48.1%			4	40	37	39	36	38		36
	0°	65°	54				5	37	33	36	33	35		33
		75°	5				6	34	31	34	30	33		30
	85°	1	7				32	28	31	28	31	28		
	90°	0	8				29	26	29	26	29	26		
						9	27	24	27	24	27	24		
						10	26	23	26	22	25	22		

Mtg	Initial fc				
	Center				
	Ht	Beam	Diameter	fc	Diameter
	8	32.1	5	16	10
	10	17.3	7	9	14
12	10.8	9	5	17	
14	7.3	11	4	21	
16	5.3	13	3	24	

NOTE: Energy (Calculated in accordance with NEMA Standard LE-5)

## FEATURES &amp; SPECIFICATIONS

## INTENDED USE

Ideal for a wide variety of low- to medium-height ceiling applications including commercial, retail and hospitality spaces where a wallwash fixture is required.

## CONSTRUCTION

Galvanized steel mounting frame with mechanical trim retention (clips) ensures secure and flush reflector mounting to ceiling. Mounting frame has cutout section for remodel applications when installation from below is necessary.

Galvanized bar hangers span up to 24" o.c. and feature built-in T-bar clips and nailers for T-bar or wood joist installation.

Frames equipped with galvanized junction box UL Listed for through wire applications.

Maximum 1-1/2" ceiling thickness.

## OPTICS

Aluminum full reflectors are optically designed to maximize lumen output and to provide superior glare control. Anodized finishes for open reflectors are semi-specular or diffuse in a variety of colors. Polyester powder coat finishes are also available.

Wallwash reflector intended to direct light with a horizontal component to increase light intensity on walls, as well as provide downward light on horizontal surfaces. Kicker must face wall to be illuminated.

## ELECTRICAL

Electronic ballast with end of lamp life protection standard. Class P thermally protected ballast protects against improper contact with insulation. Minimum starting temperature is 0°F/-18°C.

Rated for #12 AWG conductor thru-branch wiring. Minimum 90° supply wire. Ground wire provided.

## Lamp Socket Base:

DTT 4-pin lamps – 18W (G24Q-2); 26W (G24Q-3)

TRT 4-pin lamps – 18W (GX24Q-2); 26W & 32W (GX24Q-3); 42W (GX24Q-4); 57W (GX24Q-5)

## LISTING

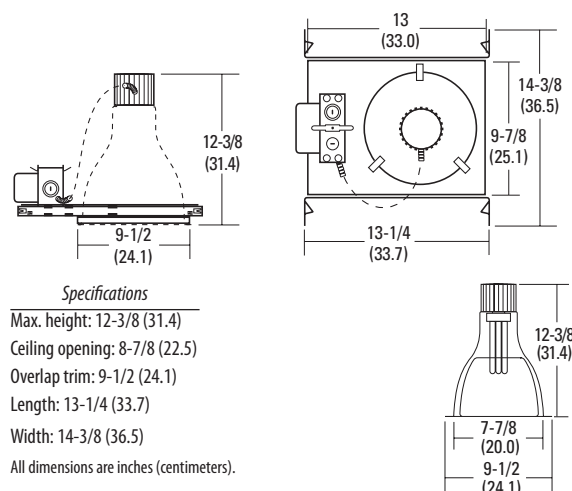
Fixtures are UL Listed for thru-branch wiring, Non-IC recessed mounting, damp location, and to U.S. and Canadian Safety Standards.

## Compact Fluorescent Downlighting

8" 8VF

## WALLWASH

Vertical 1-Lamp, Double Twin-Tube (DTT) or Triple-Tube (TRT)



## Specifications

Max. height: 12-3/8 (31.4)  
 Ceiling opening: 8-7/8 (22.5)  
 Overlap trim: 9-1/2 (24.1)  
 Length: 13-1/4 (33.7)  
 Width: 14-3/8 (36.5)  
 All dimensions are inches (centimeters).

## ORDERING INFORMATION

For shortest lead times, configure products using **bolded options**.

## 8VF

**Example:** 8VF 26-42TRT 8W1AZ MVOLT

Series	Wattage/Lamp	Reflector/Color	Voltage	Options <sup>7</sup>
<b>8VF</b>	18DTT	8W1 White	<b>MVOLT<sup>3</sup></b>	ADEZ Advance Mark 10™ electronic dimming ballast, 120V or 277V. Minimum dimming level 5%. Must be voltage specific.
	26DTT	<b>8W1A Clear diffuse</b>	120	DMHL Lutron Compact SE™ electronic dimming ballast, 120V or 277V. Minimum dimming level 5%. Must be wattage and voltage specific.
	18TRT	<b>8W1AZ Clear semi-specular</b>	277	<b>EL Emergency PSDL3 DL battery pack with integral test switch<sup>5</sup></b>
	<b>26-42TRT<sup>1</sup></b>		<b>347<sup>4</sup></b>	<b>ELR Emergency PSDL3 DL battery pack with remote test switch<sup>5</sup></b>
	26TRT	8W1G Gold diffuse		ELHL OTA I-420-R high lumen output emergency battery pack. Integral test switch provided. Maximum average lumen output 1300 (42W). <sup>6</sup>
	32TRT	8W1GZ Gold semi-specular		ELRHL IOTA I-420-EM-B high lumen output emergency battery pack. Remote test switch provided. Maximum average lumen output 1300 (42W). <sup>6</sup>
	42TRT	8W1PR Pewter diffuse		GMF Single slow-blow fuse, must specify voltage
	57TRT <sup>2</sup>	8W1WTZ Wheat semi-specular		BDP Ballast disconnect plug (meets codes that require in-fixture disconnect) <sup>4</sup>
				WLP 35K lamp (shipped separately)
				TRW White flange
				RIF1 Radio interference filter

## Notes

- Not available with DMHL or WLP.
- Not available with 347V, DMHL, EL or ELR.
- Electronic multi-volt ballast capable of operating any line voltage from 120-277V, 50 or 60Hz.
- Not available with EL or ELR.
- Add 3" (7.6) to width and 4-1/2" (11.4) to length.

<sup>6</sup> Not recommended for field installation.

<sup>7</sup> For additional options pls. contact us.

## Accessories: Order as separate catalog number.

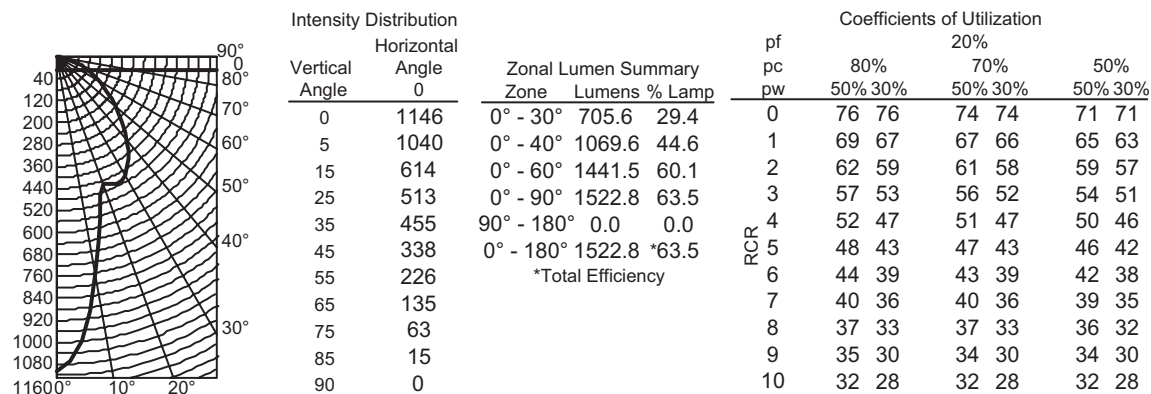
SCA8	Sloped ceiling adaptor. Degree of slope must be specified (10D, 15D, 20D, 25D, 30D) Ex: SCA8 10D.
CTE8	Ceiling thickness extender is used when ceiling thickness is greater than 1-1/2 (3.8). Maximum thickness 2 (5.1).



## 8" 8VF Vertical 1-Lamp, Double Twin-Tube (DTT) or Triple Tube (TRT), Wallwash

Distribution Curve	Distribution Data	Output Data	Coefficient of Utilization	Illuminance Data at 30" Above Floor for a Single Luminaire
--------------------	-------------------	-------------	----------------------------	---

8VF 32TRT 8W1AZ MVOLT, (1) 32W TRT lamp, .97 s/mh, 2400 rated lumens, test no. LTL12499



## FEATURES & SPECIFICATIONS

### INTENDED USE

Ideal for a wide variety of low- to medium-height ceiling applications including commercial, retail and hospitality spaces where a wet location lensed fixture is required. Ideal for shower and outdoor applications.

### CONSTRUCTION

Galvanized steel mounting frame with mechanical trim retention (clips) ensures secure and flush reflector mounting to ceiling. Mounting frame has cutout section for remodel applications when installation from below is necessary.

Galvanized bar hangers span up to 24" o.c. and feature built-in T-bar clips and nailers for T-bar or wood joist installation.

Frames equipped with galvanized junction box UL Listed for through wire applications.

Maximum 1-1/2" ceiling thickness.

### OPTICS

Aluminum clear specular upper reflectors are optically designed to maximize lumen output and to provide superior glare control.

Glass lenses are available in clear flat, tempered prismatic or fresnel glass lens to provide optimal visual comfort and improved aesthetics.

### ELECTRICAL

Electronic ballast with end of lamp life protection standard. Class P thermally protected ballast protects against improper contact with insulation. Minimum starting temperature is 0°F/-18°C.

Rated for #12 AWG conductor thru-branch wiring. Minimum 90° supply wire. Ground wire provided.

### Lamp Socket Base:

DTT 4-pin lamps – 18W (G24Q-2); 26W (G24Q-3)

TRT 4-pin lamps – 18W (GX24Q-2); 26W & 32W (GX24Q-3); 42W (GX24Q-4); 57W (GX24Q-5)

### LISTING

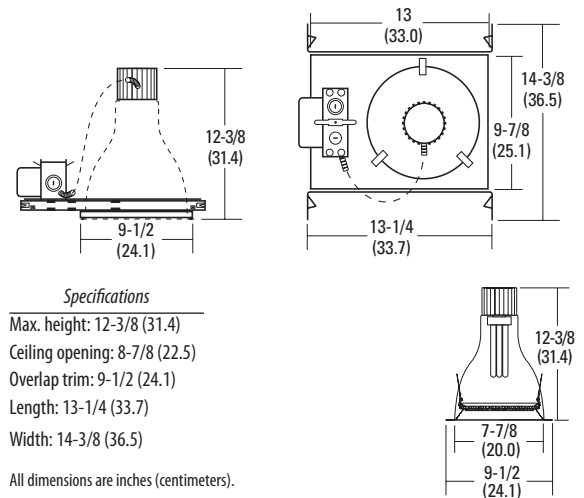
Fixtures are UL Listed for thru-branch wiring, Non-IC recessed mounting, wet location, and to U.S. and Canadian Safety Standards.

## Compact Fluorescent Downlighting

# 8" 8VF

### WET LENS

Vertical 1-Lamp, Double Twin-Tube (DTT) or Triple-Tube (TRT)



### ORDERING INFORMATION

For shortest lead times, configure products using **bolded options**.

### 8VF

**Example: 8VF 26-42TRT 802AZ MVOLT**

Series	Wattage/Lamp	Reflector/Color	Voltage	Options <sup>a</sup>
<b>8VF</b>	18DTT	8LF1 White splay, clear lens	<b>MVOLT<sup>4</sup></b>	ADEZ Advance Mark 10™ electronic dimming ballast, 120V or 277V. Minimum dimming level 5%. Must be voltage specific.
	26DTT	8LFB1 Black baffle, clear lens	120	
	18DTT	<b>8L4 White splay, fresnel lens</b>	277	DMHL Lutron Compact SE™ electronic dimming ballast, 120V or 277V. Minimum dimming level 5%. Must be wattage and voltage specific.
	<b>26-42TRT<sup>1</sup></b>	<b>8LB4 Black baffle, fresnel lens</b>	347 <sup>5</sup>	<b>EL Emergency PSDL3 DL battery pack with integral test switch<sup>6</sup></b>
	26TRT	8LF73 White splay, tempered prismatic lens		<b>ELR Emergency PSDL3 DL battery pack with remote test switch<sup>6</sup></b>
	32TRT	8LFB73 Black baffle, tempered prismatic lens		ELHL OTA I-420-R high lumen output emergency battery pack. Integral test switch provided. Maximum average lumen output 1300 (42W). <sup>7</sup>
	42TRT			ELRHL IOTA I-420-EM-B high lumen output emergency battery pack. Remote test switch provided. Maximum average lumen output 1300 (42W). <sup>7</sup>
	57TRT			GMF Single slow-blow fuse, must specify voltage
				BDP Ballast disconnect plug (meets codes that require in-fixture disconnect) <sup>5</sup>
				WLP 35K lamp (shipped separately)
				RIF1 Radio interference filter

### Notes

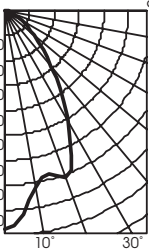
- Not available with DMHL or WLP.
- Not available with 347V, DMHL, EL or ELR.
- White painted flange standard.
- Electronic multi-volt ballast capable of operating any line voltage from 120-277V, 50 or 60Hz.
- Not available with EL or ELR.
- Add 3" (7.6) to width and 4-1/2" (11.4) to length.
- Not recommended for field installation.
- For additional options pls. contact us.

**Accessories:** Order as separate catalog number.

- SCA8 Sloped ceiling adaptor. Degree of slope must be specified (10D, 15D, 20D, 25D, 30D) Ex: SCA8 10D.
- CTE8 Ceiling thickness extender is used when ceiling thickness is greater than 1-1/2 (3.8). Maximum thickness 2 (5.1).



## 8" 8VF Vertical 1-Lamp, Double Twin-Tube (DTT) or Triple Tube (TRT), Wet Lens

Distribution Curve	Distribution Data		Output Data			Coefficient of Utilization				Illuminance Data at 30" Above Floor for a Single Luminaire					
8VF 42TRT 8L4 MVOLT, 42W TRT lamp, 1.0 s/mh, 3200 rated lumens, test no. LTL11743															
		cp	Lumens	Zone	Lumens % Lamp	pf	80%		20%						
						pc	50%		70%		50%				
						pw	50%		50%		50%				
	0	874		0° - 30°	556.5	17.4	0	43	43	42	42	40	40		
	5	823	75				1	39	38	38	37	37	36		
	15	677	196	0° - 40°	797.7	24.9	2	35	33	35	33	33	32		
	25	638	286	0° - 60°	1067.0	33.3	3	32	30	31	29	30	29		
	35	384	241	0° - 90°	1155.9	36.1	4	29	27	29	26	28	26		
	45	218	169				5	27	24	26	24	26	23		
	55	109	100	90° - 180°	0.0	0.0	6	25	22	24	22	24	21		
	65	58	58	0° - 180°	1155.9	*36.1	7	23	20	22	20	22	20		
	75	26	28	*Total Efficiency			8	21	18	21	18	20	18		
	85	1	4				9	20	17	19	17	19	17		
	90	0					10	18	16	18	16	18	16		
Task Height: 2.5ft.															
Initial FC															
Mounting	Center	50% beam - 52.4"		10% beam - 87.8"											
Height	Beam	Diameter	FC	Diameter	FC										
8.0	28.9	5.4	14.4	10.6	2.9										
10.0	15.5	7.4	7.8	14.4	1.6										
12.0	9.7	9.3	4.8	18.3	1.0										
14.0	6.6	11.3	3.3	22.1	0.7										
16.0	4.8	13.3	2.4	26.0	0.5										

## 8VF 42TRT 8LF1 MVOLT, 42W TRT lamp, .95 s/mh, 3200 rated lumens, test no. LTL11744

Intensity Distribution					Coefficients of Utilization							
	Vertical Angle	Horizontal Angle	Zonal Lumen Summary		p	20%						
			Zone	Lumens % Lamp		80	70	50%	30%			
		0				50%	30%	50%	30%	50%	30%	
40	0	893	0° - 30°	579.5 18.1	0	46	46	45	45	43	43	
120	5	903	0° - 40°	859.5 26.9	1	42	41	41	40	40	39	
200	15	763	0° - 60°	1193.5 37.3	2	38	36	37	36	36	35	
280	25	615	0° - 90°	1235.3 38.6	3	35	32	34	32	33	31	
360	35	451	90° - 180°	0.0 0.0	4	32	29	31	29	30	28	
440	45	277	0° - 180°	1235.3 *38.6	5	29	26	29	26	28	26	
520	55	138	*Total Efficiency		6	27	24	26	24	26	23	
600	65	21			7	25	22	24	22	24	21	
680	75	13			8	23	20	23	20	22	20	
760	85	1			9	21	18	21	18	21	18	
840	90	0			10	20	17	20	17	19	17	