

FEATURES & SPECIFICATIONS

INTENDED USE

For applications that require low-profile high lumen packages such as coves and displays.

ATTRIBUTES

Designed exclusively for use with T5 lamps, T5sockets and T5 electronic ballasts. Full 4' stagger for shadow-free illumination in standard or high output operation.

CONSTRUCTION

Housing formed from cold-rolled steel. No asbestos is used in this product. Heavy-duty 20-gauge channel.

Extended-height end caps retain and support sockets. Compact T5 socket features rotating collar and enclosed contacts.

FINISH

High-gloss, baked white enamel finish. Five-stage iron-phosphate pretreatment ensures superior paint adhesion and rust resistance.

OPTICAL SYSTEM

Asymmetric reflectors available.

ELECTRICAL SYSTEM

Thermally protected, resetting, Class P, HPF, non-PCB, UL Listed.

Luminaire is suitable for damp locations. AWM, TFN or THHN wire used throughout, rated for required temperatures.

INSTALLATION

Labor-saving coupler supplied for row mounting. Numerous knockouts for easy installation. Surface-mount only.

LISTING

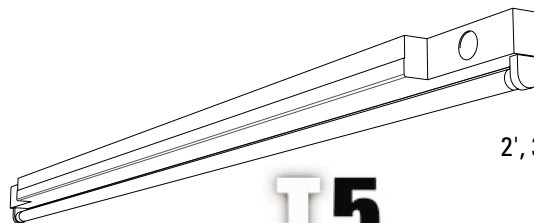
UL Listed. CSA Certified (see Options).

WARRANTY

Guaranteed for one year against mechanical defects in manufacture.

Low-Profile T5 Direct Staggered

MS5SS

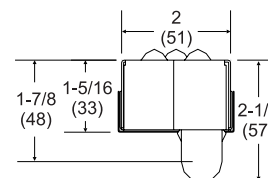


T5
Technology

2', 3', 4' or 8' Lengths
1 or 2 Lamps

Specifications

Length: 24 (609), 36 (914), 48 (1218)
or 96 (2436)
Width: 2 (51)
Depth: 2-1/4 (57)
Weight: 4.8 lbs (2.2 kg)



ORDERING INFORMATION

Example: **MS5SS 1 54T5HO MVOLT GEB10PS**

MS5SS					
Series	Number of lamps	Lamp type	Voltage	Options	
MS5SS T5 low-profile direct staggered For tandem double-length unit, add prefix T. ¹ Example: TMS5SS	1, 2 Not included.	14T5 14W T5 (22") 21T5 21W T5 (34") 24T5HO 24W T5 HO (22") 28T5 28W T5 (46") 39T5HO 39W T5 HO (34") 54T5HO 54W T5 HO (46")	347², MVOLT³ Others available.	GEB10PS Electronic ballast, ≤10% THD, Program Start GLR Internal fast-blow fuse ⁴ GMF Internal slow-blow fuse ⁴ PLF Plug-in wiring, specify 1, 2 or 3 branch circuits and hot wires (A =black, B =red, C =blue, AB or AC) EL55 Emergency battery pack (nominal 390-700 lumens; see Fluorescent Battery Packs tab) ^{1, 4} CSA CSA Certified	

Accessories

Order as separate catalog number.

MS5SSASMR 1 48 Asymmetric reflector, 4', for 1-lamp fixture⁵

MS5SSASMR 2 48 Asymmetric reflector, 4', for 2-lamp fixture⁵

NOTES:

1 Only available with 28W and 54W.

2 Only available with 54W.

3 Available with GEB10PS only.

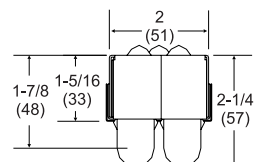
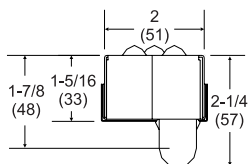
4 Specify voltage.

5 For other lengths, replace 48 with correct length required; nominal 2'-24", 3'-36". Two reflectors required for 8' lengths.

MS5SS T5 Direct, Low Profile, Staggered

MOUNTING DATA

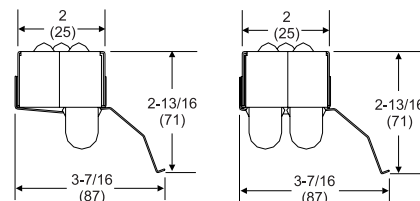
For unit or row installation or surface mounting.



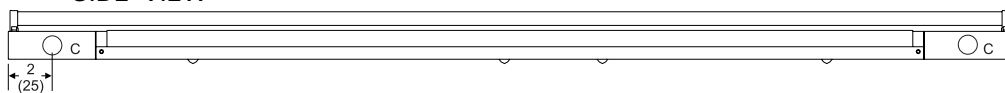
DIMENSIONS

REFLECTORS

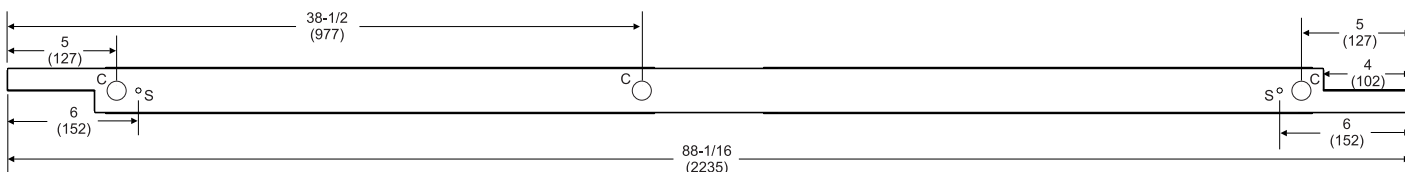
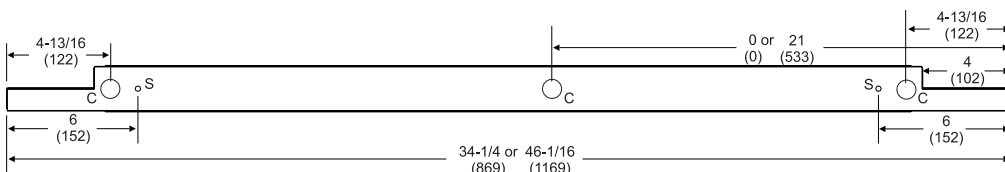
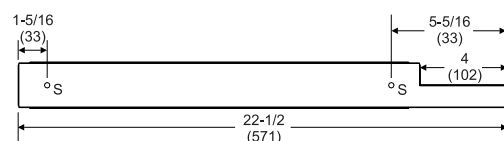
C = 7/8 (22) Dia. K.O.
S = 1/4 (6) Dia. hole



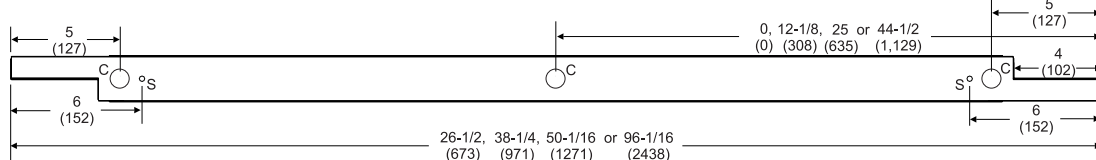
SIDE VIEW



ONE-LAMP CHANNELS



TWO-LAMP CHANNELS



PHOTOMETRICS

Calculated using the zonal cavity method in accordance with IESNA LM41 procedure. Floor reflectances are 20%. Lamp configurations shown are typical. Full photometric data on these and other configurations available upon request.

To learn more about B-I-A please visit us at our
WEB site: www.BiaGmbH.com

