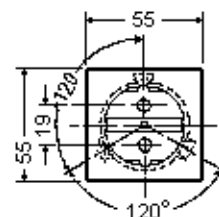
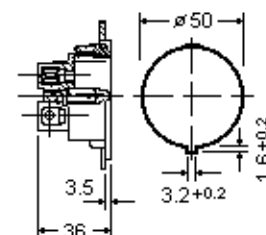


1111000

Dimensions = mm

For Panel Thickness
1 to 3.5 mm

SCHUKO-Einbausteckdosen

Thermoplast, einteilig,
Schnellbefestigung durch
Stahlfedern

2-polig + PE, 10/16A 250Vac,
nach DIN 49440

German "SCHUKO" Snap-In Receptacles

Thermoplastic, Single-Piece Con-
struction, Quick Snap-In with
Steel Spring Bracket

2-Pole 3-Wire Grounding, 10/16 Amp,
250 Volt AC, according DIN 49440

Catalog No.	Color	Description	Wght/ea	UPE/Pack	EDP-No
1111000	Black	SCHUKO Snap-In Receptacle	35g	100	115398
1111010	White	SCHUKO Snap-In Receptacle	35g	100	115399
1111050	Blue	SCHUKO Snap-In Receptacle	35g	100	115400