

1P Arktite® Heavy Duty Circuit Breaking Receptacle Assemblies and Housings

30 A, 600 VAC/250 VDC, 50**-400 hertz

NEMA 4 Watertight

Receptacle Assembly



Receptacle



Mating Plug



Mating Connector

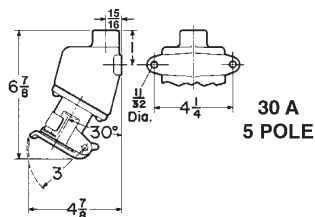
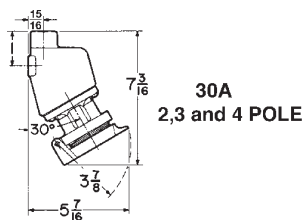


With ARE Back Boxes Style 1

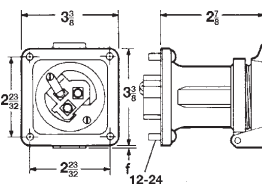
Description	Hub Size	Spring Door Cat. #	Receptacle Housings Only Style 1		Mating APJ Plugs† Style 1	Cable Dia.	Mating APR Connectors Style 1	
			Spring Door Cat. #	Threaded Cap Only Cat. #			Cat. #	Cable Dia.
2-wire, } 2-pole }	1/2 3/4	ARE3211 ARE3212	AR321	AR327	APJ3275	0.39 to 1.20	APR3255	0.39 to 1.20
3-wire, } 3-pole }	3/4 1	ARE3312 ARE3313	AR331	AR337	APJ3375	0.39 to 1.20	APR3355	0.39 to 1.20
4-wire, } 4-pole }	3/4 1	ARE3412 ARE3413	AR341	AR347	APJ3475	0.39 to 1.20	APR3455	0.87 to 1.02
5-wire, } 5-pole }	1	ARE3513	AR351		APJ3573	.500 to .875	APR3553	.500 to .875
Style 2			Style 2		Style 2		Style 2	
2-wire, } 3-pole }	3/4 1	ARE3322 ARE3323	AR332	AR338	APJ3575	.875 to 1.375	APR3555	.875 to 1.375
3-wire, } 4-pole }	3/4 1	ARE3422 ARE3423	AR342	AR348	APJ3485	0.39 to 1.20	APR3465	0.39 to 1.20
4-wire, } 5-pole }	1	ARE3523	AR352		APJ3583 APJ3585	.500 to .875 .875 to 1.375	APR3563 APR3565	.500 to .875 .875 to 1.375

Dimensions

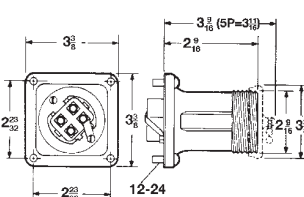
ARE Assembly



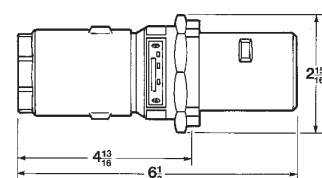
AR Receptacle - Spring Door



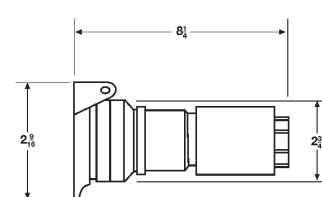
AR Receptacle - Open and with cap



Plug



Connector



** For use on systems less than 60 hertz the receptacles, plugs and connectors are for disconnect use only.