

WLRS and WLRD Wet Location Covers

**For NEMA Configuration Receptacle Interiors and GFCI Receptacles
For FS and FD Cast Device Boxes
Flush Device Boxes**

Application:

WLRS, WLRD and WLGf series wiring device covers are designed to meet the total NECode requirements for wet locations. WLRS, WLRD and WLGf series covers are suitable for use in wet and damp locations:

- wherever portable equipment is required
- as general purpose utility receptacle covers
- for industrial, commercial or residential use
- in areas where electrical requirements do not exceed medium duty ratings
- to mount FS and FD single-gang or multi-gang boxes having individual cover openings (see Sect. 3F for listings)
- to mount on most flush device boxes (see Accessories)

Features:

WLRS, WLRD and WLGf covers:

- self closing spring door assures protection of wiring device at all times, in wet and damp locations
- one piece EPDM gasket provides environmental protection of wiring device at all times
- EPDM gasketing material offers excellent resistance to ozone, weather and temperature extremes of -50°F to 260°F
- die cast, copper-free aluminum construction with aluminum lacquer finish provides maximum corrosion resistance
- positive ground path ensured for all exposed metal parts

NEMA configuration receptacle interiors:

- comply with NEMA Standards WD-1 and WD-5
- grounded through an extra contact in all types except 3-phase applications; self grounded in duplex variety
- back and side wired
- offered in single and duplex configurations for use with standard plugs
- specification grade

Standard Materials:

- WLRS, WLRD and WLGf face plate and cover – die cast copper-free aluminum
- Cover hinge spring – stainless steel
- Cover screws – corrosion resistant metal
- Gasket – ethylene propylene rubber (EPDM)

Standard Finishes:

- Copper-free aluminum – aluminum lacquer

Electrical Rating Ranges:

- 15 amperes; 125, 250, or 277 volts
- 20 and 30 amperes; 125, 250, 277, 480, 600, 125/250, 208/120, 480/277 or 600/347 volts

Accessories:

Flush mounting adapter – **WLRA-1** required for flush mounting on device boxes. (Order separately)

Certifications and Compliances:

- ANSI/UL Standard 514A
- NECode 410-57
- OSHA Standards, Subpart “S”
- NEMA Standards WD-1, 1974 (Straight Blade) and WD-5, 1972 (Locking Type)



Typical installation

**Spring Door Covers – with Gasket*
For NEMA Configuration Round Receptacles**

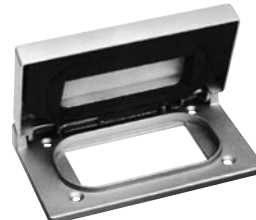


Description Cat. #	Single cover WLRS-1 WLRS-2	Diameter 1 3/8" 1 1/2"	Duplex cover WLRD-1†	Diameter 1 3/8"
-----------------------	----------------------------------	------------------------------	-------------------------	--------------------

† Horizontal mount only.

* Patent Number 4,058,358

**Spring Door Covers – with Gasket
For GFCI Receptacles in Wet Locations**



Description Cat. #	Horizontal Mount for flush device boxes WLGf	Horizontal Mount for FS and FD device boxes WLGf-FS	Vertical Mount for FS and FD device boxes WLGf-FSV
-----------------------	---	--	---