

4F

EAJ Condulet® Conduit Outlet Boxes With Covers

Cl. I, Div. 1 & 2, Groups A†,B,C,D Explosionproof
 Cl. II, Div. 1, Groups E,F,G Dust-Ignitionproof
 Cl. II, Div. 2, Groups F,G Raintight
 Cl. III Wet Locations
 NEMA 3, 4, 7ABCD, 9EFG

Application:

EAJ series conduit outlet boxes are installed in conduit systems within hazardous areas to:

- protect conductors in threaded rigid conduit
- act as pull and splice boxes
- interconnect lengths of conduit
- change conduit direction
- provide access to conductors for maintenance and future system changes

Features:

EAJ conduit outlet boxes have:

- water shedding cover – suitable for wet locations when mounted in upright position
- external cover threads on body protecting conductors from damage during pulling
- no pinching of conductors during cover installation
- six different hub arrangements
- taper threaded hubs to provide ground continuity
- smooth integral hub bushing to protect conductor insulation when pulling
- internally threaded cover openings for additional wiring room
- flat overlapping threaded covers furnished with boxes
- weather-resistant finish
- green ground screw standard in all boxes
- four standard mounting pads, except for EAJB and EAJD

Standard Materials:

- Body – *Feraloy*® iron alloy
- Cover – copper-free aluminum

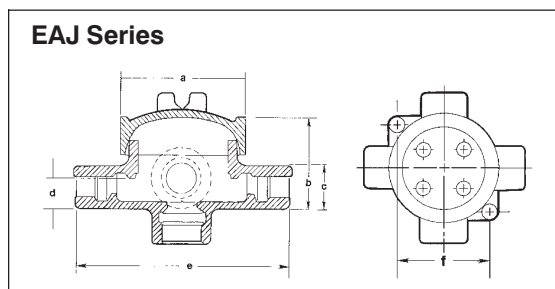
Standard Finishes:

- *Feraloy* iron alloy – electrogalvanized and aluminum acrylic paint
- Aluminum – natural

Size Ranges:

- Hub – 1/2" to 2"
- Cover opening – 3 3/16" to 5" dia.

Dimensions



Certifications and Compliances:

- NEC/CEC:
 Class I, Division 1 & 2, Groups A†,B,C,D
 Class II, Division 1, Groups E,F,G
 Class II, Division 2, Groups F,G
 Class III
- UL Standard: 886
- CSA Standard: C22.2 No. 30

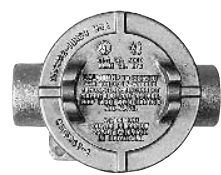
Options:

Description	Suffix to be Added to Cat. #
Bodies – copper-free aluminum	SA†
Covers – <i>Feraloy</i> iron alloy – electrogalvanized and aluminum acrylic paint	WOD
Corro-free epoxy power coat	S752



EAJB

Cover Opening Dia.	Hub Size	Cat. #
3 3/16	1/2	EAJB16†
3 3/16	3/4	EAJB26†
3 3/16	1	EAJB36†



EAJC

Cover Opening Dia.	Hub Size	Cat. #
3 3/16	1/2	EAJC16†
3 3/16	3/4	EAJC26†
3 3/16	1	EAJC36†



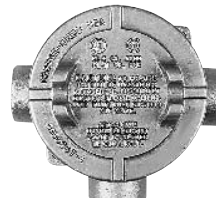
EAJD

Cover Opening Dia.	Hub Size	Cat. #
3 3/16	1/2	EAJD16†
3 3/16	3/4	EAJD26†
3 3/16	1	EAJD36†



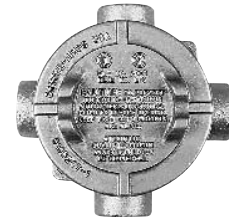
EAJL

Cover Opening Dia.	Hub Size	Cat. #
3 3/16	1/2	EAJL16†
3 3/16	3/4	EAJL26†
3 3/16	1	EAJL36†



EAJT

Cover Opening Dia.	Hub Size	Cat. #
3 3/16	1/2	EAJT16†
3 3/16	3/4	EAJT26†
3 3/16	1	EAJT36†
5	1 1/4	EAJT49††
5	1 1/2	EAJT59††
5	2	EAJT69††



EAJX

Cover Opening Dia.	Hub Size	Cat. #
3 3/16	1/2	EAJX16†
3 3/16	3/4	EAJX26†
3 3/16	1	EAJX36†

EAJ Threaded Flat Covers

Cover Opening Diameter	Cat. #
3 3/16	EAJ06
5	EAJ09



Dome Covers

Cover Opening Dia.	Depth	Cat. #
3 3/16	2	EAJ0612



Fixture Covers Union Hub Type

Cover Opening Dia.	Fixt. Stem Size	Cat. #
3 3/16	3/4	EAJ0687*



Cat. #	a	b	c	d	e	f
16	3 3/4	2 17/32	1 1/2	3/4	5 5/16	3 3/32
26	3 3/4	2 25/32	1 3/4	7/8	5 9/16	3 3/32
36	3 3/4	2 25/32	1 3/4	7/8	5 9/16	3 3/32
49	5 3/4	4 1/16	2 3/16	1 3/32	7 5/16	4 3/4
59	5 3/4	4 1/16	3	1 1/2	7 13/16	4 3/4
69	5 3/4	4 1/16	3	1 1/2	7 13/16	4 3/4

* EAJ0687 is listed for Group C & D only.

† Available in copper-free aluminum, add suffix -SA.
 ‡ Form 9 products with 5" cover opening are not suitable for Group A.