

## Weatherproof Outdoor HID Luminaires

### Luminarea™ Series Floodlight Luminaires



Luminarea floodlights are ideally suited for area and outdoor parking lot lighting. The floodlights are available in 3 housing sizes in 150 to 1000 watt metal halide or high pressure sodium. The bronze epoxy powder coated housing is designed for an extended, trouble-free life. The housing is gasketed for raintight (NEMA 3R) locations. Floodlights are available with an optional slip fitter or swivel bracket for mounting flexibility. Typical applications include parking lots, area lighting, street lighting, recreational lighting and security lighting.

#### Key Features and Benefits

- Durable die cast aluminum housing for long product life.
- Bronze powder paint finish for corrosive environments.
- Stainless steel hardware.
- Hinged lens for easy access to wiring and lamp chamber.
- Polished aluminum reflector maximizes light output.
- Side, bottom & rear plugged threaded entries for easy wiring.
- 150W & 175W fixture includes adjustable mounting bracket.
- 250 to 1000 watt fixtures must be ordered with separate slipfitter or swivel bracket (see page 256).
- Three housing sizes insure maximum utilization of space.
- Available in 150 to 1000 watt metal halide or high pressure sodium versions.

#### Certifications and Compliances

- UL1598
- UL and cUL listed
- NEMA 3R raintight

#### Materials & Finishes

- Housing - Die Cast Aluminum
- Lens - Tempered Glass
- Gasket - Silicone
- Hardware - Stainless Steel

#### Ratings

- 150 to 1000 watt metal halide and high pressure sodium.
- 250 and 400 watt metal halide available with pulse start.
- Multi-tap (120, 208, 240, 277 volts) or Tri-tap (120, 277, 347 volts)
- 480V

### Ordering Information

High Pressure Sodium					
Watts	Voltage	Catalog Number	Description	Lamp Base	Ballast
150	120/208/240/277	WLFL150HPS/MT <sup>1</sup>	Medium Housing	Medium	HPF
150	120/277/347	WLFL150HPS/TT <sup>1</sup>	Medium Housing	Medium	HPF
250	120/208/240/277	WLFL250HPS/MT <sup>2</sup>	16" × 16" Housing	Mogul	CWA-HPF
250	120/277/347	WLFL250HPS/TT <sup>2</sup>	16" × 16" Housing	Mogul	CWA
400	120/208/240/277	WLFL400HPS/MT <sup>2</sup>	16" × 16" Housing	Mogul	CWA-HPF
400	120/277/347	WLFL400HPS/TT <sup>2</sup>	16" × 16" Housing	Mogul	CWA
1000	120/208/240/277	WLFL1000HPS/MT <sup>3</sup>	23" × 23" Housing	Mogul	CWA-HPF
1000	120/277/347	WLFL1000HPS/TT <sup>3</sup>	23" × 23" Housing	Mogul	CWA

Metal Halide					
Watts	Voltage	Catalog Number	Description	Lamp Base	Ballast
175	120/208/240/277	WLFL175MH/MT <sup>1</sup>	Medium Housing	Medium	CWA
175	120/277/347	WLFL175MH/TT <sup>1</sup>	Medium Housing	Medium	CWA
250	120/208/240/277	WLFL250MH/MT <sup>2</sup>	16" × 16" Housing	Mogul	CWA-HPF
250	120/208/240/277	WLFL250MH/MT-S828 <sup>2</sup>	16" × 16" Housing, Pulse Start	Mogul	Pulse
250	120/277/347	WLFL250MH/TT <sup>2</sup>	16" × 16" Housing	Mogul	CWA
400	120/208/240/277	WLFL400MH/MT <sup>2</sup>	16" × 16" Housing	Mogul	CWA-HPF
400	120/208/240/277	WLFL400MH/MT-S828 <sup>2</sup>	16" × 16" Housing, Pulse Start	Mogul	Pulse
400	120/277/347	WLFL400MH/TT <sup>2</sup>	16" × 16" Housing	Mogul	CWA
1000	120/208/240/277	WLFL1000MH/MT <sup>3</sup>	23" × 23" Housing	Mogul	CWA-HPF
1000	120/277/347	WLFL1000MH/TT <sup>3</sup>	23" × 23" Housing	Mogul	CWA

Lamp not included.

1. 150W & 175W Floodlight - Comes with adjustable mounting bracket with 1/2" thread.

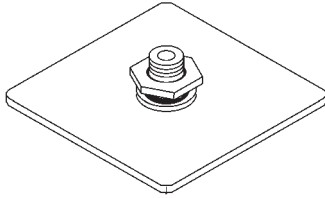
2. 250W & 400W Floodlight - Must buy swivel bracket or slipfitter separately

3. 1000W Floodlight - Must buy slipfitter separately

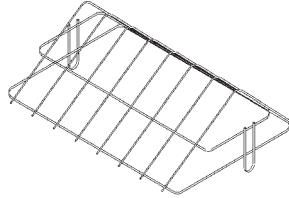
## Weatherproof Outdoor HID Luminaires

### Luminarea™ Series Accessories

#### WALLPACKS

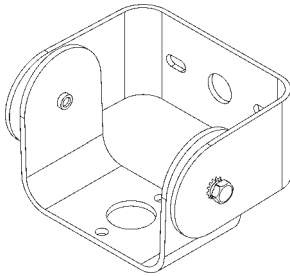


Mounting Plate

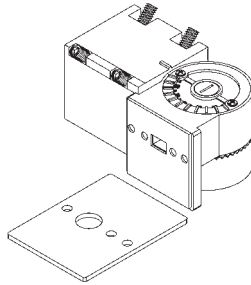


Wire Guards

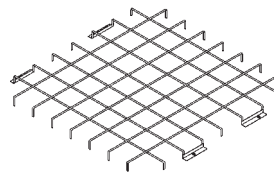
#### FLOODLIGHTS



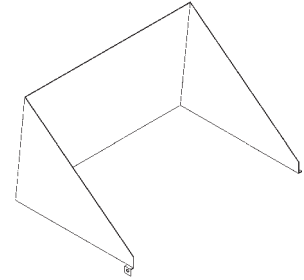
Swivel Bracket



Slipfitters



Wire Guards



Glare Shields

#### Ordering Information

Accessories for Wallpacks & Area Luminaires	
Catalog Number	Description
WLWMP-1	Mounting Plate for 100W Wallpack & Area Luminaire Wire Guard for 100 W Wallpack Wire Guard for 150/175W Wallpack Wire Guard for 250 & 400W Wallpack
WLWPWG-1	
WLWPWG-2	
WLWPWG-3	
Accessories for Floodlights	
Catalog Number	Description
WLFLSB-3	Swivel Bracket for 250 & 400W Floodlight Slipfitter for 250 and 400W Floodlight Slipfitter for 1000W Floodlight Wire Guard for 250 & 400W Floodlight Wire Guard for 1000W Floodlight Glare Shield for 150/175W Medium Floodlight Glare Shield for 250 & 400W Floodlight Glare Shield for 1000W Floodlight
WLFLSF-3	
WLFLSF-4	
WLFLWG-3	
WLFLWG-4	
WLFLGS-2	
WLFLGS-3	
WLFLGS-4	