

India / South Africa - Angled Mains Line Plug 15A (BS 546/A)

Angled Mains Line Plug with Grounding Contact, Indian & South African Standard, 2P+E, 15 Amp.

Winkelstecker mit Schutzkontakt, Ausführung für Indien und Südafrika, 2P+E, 15 Amp.

SPECIFICATIONS

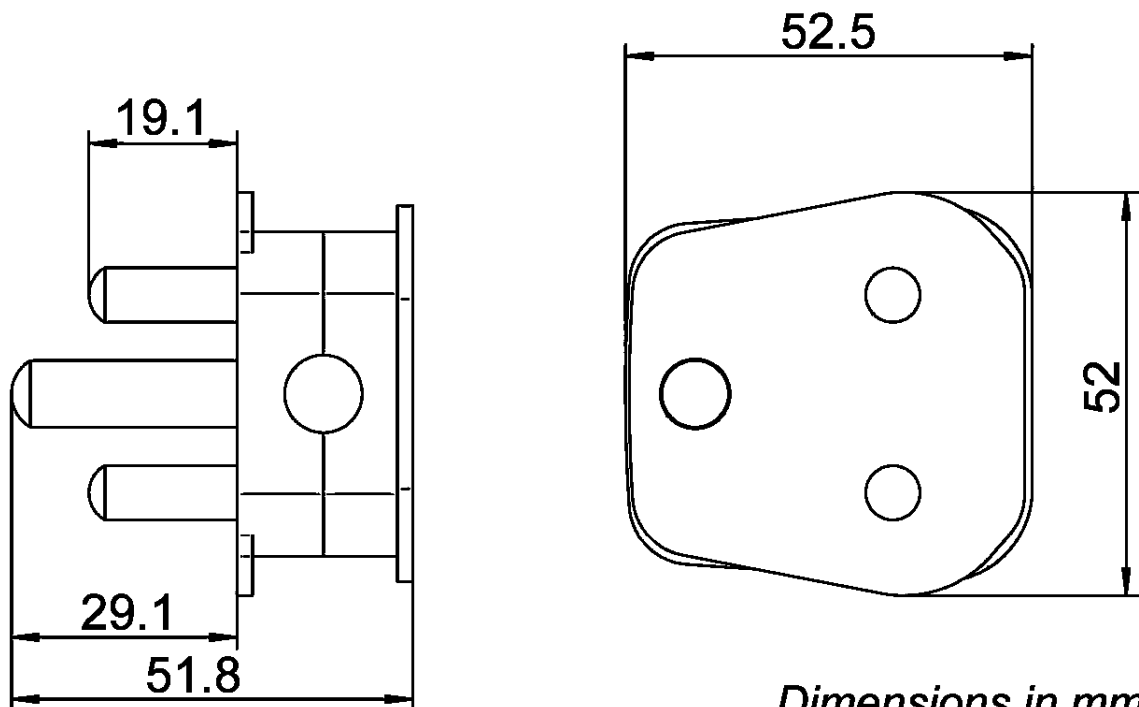
- **Electrical Ratings:**
250V AC, 15A
- **Standards according to:**
BS 546/A
- **Rewireable, for Supply Line:**
H05VV-F 3G0.75mm², 1.0mm² and 1.5mm²
- **Material & Type of Terminals:**
Ms (screw terminals)
- **Material of Housing and Carrying Parts:**
Polyamide



854 WH

- **RoHS COMPLIANT 2002/96/EC**

Catalog No.	Color	Description	VPE / Packed	EDP-Nr.
854BK	Black	Plug, 15 Amp, 250V AC, according BS 546/A	25 ea	125256
854WH	White	Plug, 15 Amp, 250V AC, according BS 546/A	25 ea	125257



Dimensions in mm