

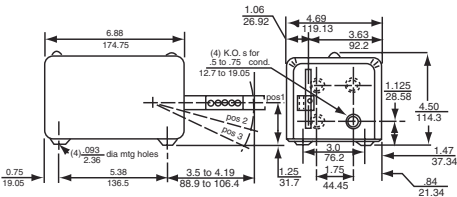
Float Switches

Class 9038—Types A, B, C—Mechanical Alternators

Type A Open Tank—Alternators are designed to provide motor alternation in the operation of two motors.



Type AG1
Mechanical Alternator, Float Operated



| Class 9038 Type A | | | | | | | |
|--|--------------------------------------|-------------|-------|-------------|-------|-------------------|-------|
| Application | Description | NEMA Type 1 | | NEMA Type 4 | | NEMA Type 7 and 9 | |
| | | Type | Price | Type | Price | Type | Price |
| For Open Tank or Sump Systems Using Duplex Pumps | Mechanical Alternator Float Operated | AG1 | | AW1 | | AR1 | |

For use with Class 9049 Float Accessories listed on page 20-12. Type AW, AR alternators MUST use center hole floats.

| Type | Without Comp. Spring (No Form C) | | Maximum Weight of Rod and Stops That Can Be Supported By Compensating Spring (Form C) Note: AW1 and AR1 have compensating spring standard. | Length of Rod Which Can Be Supported with Compensating Spring at Max. Adjust. | | |
|--------------------------------------|----------------------------------|------------|---|---|-----------------|----------|
| | Force Up | Force Down | | Brass | Stainless Steel | Aluminum |
| AG1 (Min. Lever Ext.) | 18 oz. | 20 oz. | 47 oz. | 10 ft. | 12 ft. | 25 ft. |
| AG1 (Max. Lever Ext.) | 16 | 17 | 41 | 8 | 10 | 21 |
| AG1 Form R (Min. Lever Ext.) | 14 | 16 | 33 | 7 | 8 | 17 |
| AG1 Form R (Max. Lever Ext.) | 11 | 12 | 30 | 6 | 7 | 15 |
| AR1, AW1 (Standard Lever) | ... | ... | 74 | 16 | 20 | 41 |
| AR1, Form R, AW1 Form R (Std. Lever) | ... | ... | 85 | 19 | 23 | 47 |

Table Of Operating Forces - Types AG, AR and AW

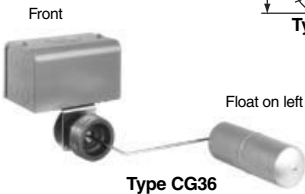
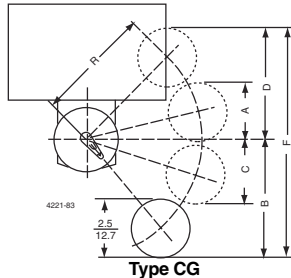
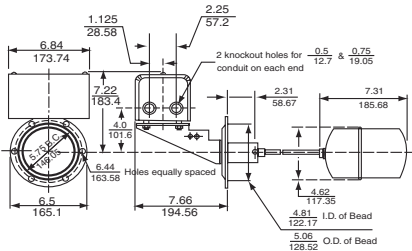
| | | | | | | |
|--------------------------------------|--------|--------|--------|--------|--------|--------|
| AG1 (Min. Lever Ext.) | 18 oz. | 20 oz. | 47 oz. | 10 ft. | 12 ft. | 25 ft. |
| AG1 (Max. Lever Ext.) | 16 | 17 | 41 | 8 | 10 | 21 |
| AG1 Form R (Min. Lever Ext.) | 14 | 16 | 33 | 7 | 8 | 17 |
| AG1 Form R (Max. Lever Ext.) | 11 | 12 | 30 | 6 | 7 | 15 |
| AR1, AW1 (Standard Lever) | ... | ... | 74 | 16 | 20 | 41 |
| AR1, Form R, AW1 Form R (Std. Lever) | ... | ... | 85 | 19 | 23 | 47 |

▲ Rod length has been determined using weight of rod material furnished on Class 9049 accessories (3/8" O.D. tubing). Other types of rod should be weighed and compared to "weight of rod—above."
■ Add 2 oz. for Form N5 High Water alarm.

Types B, C Closed Tank—Flange mounted with bellows seal for control of liquid level within a closed tank. Build up the switch to meet your requirements from the basic switch, rod kit, and float kit groups below.



Type BG
Shown with 9049GBR3 Rod Kit and 9049BF1 Float Kit Installed.



Type CG36

| Class 9038 Basic Switch Float Rod Lever Figure No. | NEMA Type 1 | | NEMA Type 4 | | NEMA Type 7 & 9 | |
|--|-------------|-------|-------------|-------|-----------------|-------|
| | Type | Price | Type | Price | Type | Price |
| 1—Above and below centerline | BG21 | | BW21 | | BR21 | |
| 2—Below centerline | BG22 | | BW22 | | BR22 | |
| 3—Vertically mounted switch | BG23 | | BW23 | | BR23 | |

Class 9049 Rod Kits For Use With 9038 Type B

| Length of Rod (Inches) "R" | Brass | | #316 Stainless Steel | |
|----------------------------|-----------|-------|----------------------|-------|
| | 9049 Type | Price | 9049 Type | Price |
| 3" | GBR3 | | GSR3 | |
| 5" | GBR5 | | GSR5 | |
| 7" | GBR7 | | GSR7 | |
| 9" | GBR9 | | GSR9 | |
| 11" | GBR11 | | GSR11 | |
| 13" | GBR13 | | GSR13 | |
| Special Lengths ♦ | GBR99 | | GSR99 | |

♦ Recommended maximum length is 36 inches.

Class 9049 Float Kits For Use With 9038 Type B

| Description | Price |
|----------------------|---------------------|
| #304 Stainless Steel | Class 9049 Type BF1 |
| #316 Stainless Steel | Class 9049 Type BF2 |

Type C switches are attached to the tank by means of a 2 1/2 inch screw-in connection. An external pointer indicates the float position within the tank when the unit is mounted. Switches come complete with screw-in connector, stainless steel float and rod.

Class 9038 Type C

| Float Position Viewed from Front of Switch Facing Indicator Scale | "R" | Approx. Water Level Change | | NEMA Type 1 | | NEMA Type 4 | | NEMA Type 7, 9 | |
|---|--------|----------------------------|--------|-------------|-------|-------------|-------|----------------|-------|
| | | Min | Max | Type | Price | Type | Price | Type | Price |
| Right | 7" | 6 1/2" | 13" | CG31 | | CW31 | | CR31 | |
| Left | 7" | 6 1/2" | 13" | CG32 | | CW32 | | CR32 | |
| Right | 4 1/4" | 4" | 7 3/4" | CG33 | | CW33 | | CR33 | |
| Left | 4 1/4" | 4" | 7 3/4" | CG34 | | CW34 | | CR34 | |
| Right | 5" | 4 3/4" | 9 1/4" | CG35 | | CW35 | | CR35 | |
| Left | 5" | 4 3/4" | 9 1/4" | CG36 | | CW36 | | CR36 | |

Float Travel Adjustments For Class 9038 Type C

| "R" | Minimum | | | | | Maximum | | | | |
|--------|---------|--------|--------|--------|-----|---------|--------|--------|--------|---------|
| | A | B | C | D | F | A | B | C | D | F |
| 4 1/4" | 2" | 3 1/2" | 2 1/2" | 3 1/2" | 7" | 3 1/2" | 4 3/4" | 3 3/4" | 4 3/4" | 9 1/2" |
| 5" | 2 1/4" | 4" | 2 3/4" | 4" | 8" | 3 3/4" | 5 1/4" | 3" | 5 1/4" | 10 1/2" |
| 7" | 2 1/2" | 5" | 2" | 5" | 10" | 5" | 7" | 4" | 7" | 14" |

For Replacement Float, see Type 9049 HF page 20-12