



Littelfuse FLNR_ID/FLSR_ID Indicator™ fuses provide visual blown fuse indication at a glance. The patented state-of-the-art solid state design provides maximum reliability and superior performance characteristics in a true dual-element design. The use of Indicator™ fuses reduces down-time, nuisance opening, increases safety, and can save thousands of dollars in lost production time.

APPLICATIONS

- Service entrance switches
- Switchboard main and feeder switches
- Motor control center mains and motor branch circuits
- Individual fused combination motor controllers
- Distribution panelboards
- Industrial control panels
- Protection of fully-rated panelboards and loadcenters
- All general purpose circuits

FEATURES/BENEFITS

- **Reduce Down-Time** — A glance at the indicating window of a FLNR_ID or FLSR_ID Indicator™ fuse pinpoints open fuses immediately. If the window is dark, the fuse has opened. It's that simple. No fuse testing required. Machine operators can immediately determine that there is an open fuse and request maintenance personnel to bring the proper replacement.
- **Reduce Nuisance Opening** — FLNR_ID and FLSR_ID Indicator™ fuses have superior time-delay and cycling characteristics which can lengthen fuse life and decrease needless opening.
- **Reduce Fuse Inventory** — Because FLNR_ID and FLSR_ID Indicator™ fuses have superior performance characteristics they can be used on a variety of applications, thus decreasing fuse inventory.

SPECIFICATIONS

- Voltage ratings:** AC: 250 Volts (FLNR_ID);
600 Volts (FLSR_ID)
DC: 125 Volts (FLNR 1/10-30A);
125 Volts (FLNR_ID 35-600A);
300 Volts (FLSR_ID)
- Interrupting ratings:** AC: 200,000 amperes rms symmetrical
300,000 amperes rms symmetrical
(Littelfuse self-certified)
DC: 20,000 amperes
- Ampere range:** 1/10 – 600 amperes
- Approvals:** AC: UL Listed Class RK5 fuses per UL 248
(formerly UL 198E)
(File No. E81895)
CSA Certified HRCl-R per C22.2 #106
(File No. LR29862)
DC: FLNR: UL Listed 125 Volts per UL 198L
(File No. E81895)
FLNR_ID: UL Listed 125 Volts per UL 198L
(File No. E81895)
FLSR_ID: UL Listed 300 Volts per UL 198L
(File No. E81895)
MSHA 300 Volt listing
Federal Specification No. WF1814 (QPL)

AMPERE RATINGS

1/10**	1/100	1/50	4	8	30	80	225
1/8	1/100	2	4½	9	35	90	250
15/100	1	2¼	5	10	40	100	300
3/10	1½	2½	5½	12	45	110	350
¼	1¼	2¾	6	15	50	125	400
3/10	1¾	3	6¼	17½	60	150	450
3/10	1½	3¾	7	20	70	175	500
½	1¾	3½	7½	25	75	200	600

**FLNR only

NOTE: For 1/10 - 30 ampere 250 volt fuses, order non-indicating FLNR series fuses.

NOTE: All FLSR_ID fuses rated 1 amp and above are Indicator fuses.

Example part number (series & amperage): FLSR100ID

RECOMMENDED FUSE BLOCKS

LR250 series (for FLNR_ID series fuses)

LR600 series (for FLSR_ID series fuses)

Refer to Fuse Block section of this catalog for additional information.

- **Reduce Equipment Damage** — FLNR_ID and FLSR_ID Indicator™ fuses have superior overload and short circuit protection which can reduce equipment damage. Indicator™ fuses also provide IEC Type II protection to NEMA motor starters without the high cost of RK1 fuses.
- **Reduce Accidents** — The FLNR_ID and FLSR_ID Indicator™ fuses improve safety by minimizing exposure to live circuits. Unlike other forms of blown fuse indication, Indicator™ fuses provide built-in blown fuse indication with the power on or off. No second guessing whether a light means a good or bad fuse and no current going across a blown fuse to power a lighted accessory.

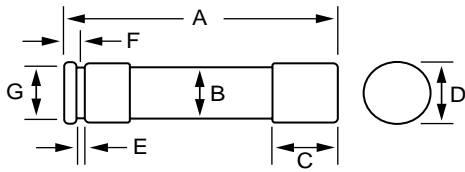


FIG. 1

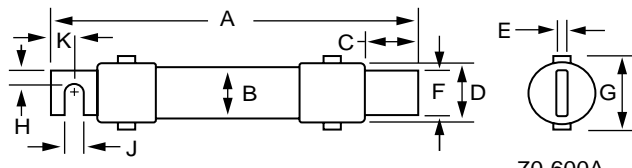


FIG. 2

70-600A

AMPERES	REFER TO FIG. NO.	SERIES	DIMENSIONS IN INCHES (mm in parentheses)									
			A	B	C	D	E	F	G	H	J	K
1/10 – 30	1	FLNR_ID	2 (50.8)	1/2 (12.7)	1/2 (12.7)	9/16 (14.3)	5/64 (2.0)	5/32 (4.0)	3/8 (9.5)	—	—	—
		FLSR_ID	5 (127.0)	3/4 (19.1)	5/8 (15.9)	13/16 (20.6)	3/32 (2.4)	3/16 (4.8)	5/8 (15.9)	—	—	—
35 – 60	1	FLNR_ID	3 (76.2)	3/4 (19.1)	5/8 (15.9)	13/16 (20.6)	3/32 (2.4)	3/16 (4.8)	5/8 (15.9)	—	—	—
		FLSR_ID	5-1/2 (139.7)	1 (25.4)	5/8 (15.9)	1-1/16 (27.0)	3/32 (2.4)	1/4 (6.4)	7/8 (22.2)	—	—	—
70 – 100	2	FLNR_ID	5-7/8 (149.2)	1 (25.4)	1-1/16 (27.0)	1-1/16 (27.0)	1/8 (3.2)	3/4 (19.1)	1-1/4 (31.8)	1/4 (6.4)	9/32 (7.1)	1/2 (12.7)
		FLSR_ID	7-7/8 (200.0)	1-1/4 (31.8)	1-1/16 (27.0)	1-5/16 (33.3)	1/8 (3.2)	3/4 (19.1)	1-1/2 (38.1)	1/4 (6.4)	9/32 (7.1)	1/2 (12.7)
110 – 200	2	FLNR_ID	7-1/8 (181.0)	1-1/2 (38.1)	1-15/32 (37.3)	1-19/32 (40.5)	3/16 (4.8)	1-1/8 (28.6)	1-27/32 (46.8)	7/16 (11.1)	9/32 (7.1)	11/16 (17.5)
		FLSR_ID	9-5/8 (244.5)	1-3/4 (44.5)	1-15/32 (37.3)	1-27/32 (46.8)	3/16 (4.8)	1-1/8 (28.6)	2-3/32 (53.2)	7/16 (11.1)	9/32 (7.1)	11/16 (17.5)
225 – 400	2	FLNR_ID	8-5/8 (219.1)	2 (50.8)	1-15/16 (49.2)	2-3/32 (53.2)	1/4 (6.4)	1-5/8 (41.3)	2-11/32 (59.5)	5/8 (15.9)	13/32 (10.3)	15/16 (23.8)
		FLSR_ID	11-5/8 (295.3)	2-1/2 (63.5)	2 (50.8)	2-19/32 (65.9)	1/4 (6.4)	1-5/8 (41.3)	2-27/32 (72.2)	5/8 (15.9)	13/32 (10.3)	15/16 (23.8)
450 – 600	2	FLNR_ID	10-3/8 (263.5)	2-1/2 (63.5)	2-3/8 (60.3)	2-19/32 (65.9)	1/4 (6.4)	2 (50.8)	2-27/32 (72.2)	3/4 (19.1)	17/32 (13.5)	1-1/8 (28.6)
		FLSR_ID	13-3/8 (339.7)	3 (76.2)	2-13/32 (61.1)	3-3/32 (78.6)	1/4 (6.4)	2 (50.8)	3-11/32 (84.93)	3/4 (19.1)	17/32 (13.5)	1-1/8 (28.6)

For additional application information request Product Bulletin EL-4

