

JTD Series POWR-PRO® Class J Fuses Non-Indicator • 600 V AC • Time-Delay • 8/10 – 600 Amperes



SPECIFICATIONS

Voltage Ratings: AC: 600 Volts
DC: Contact Factory

Interrupting Ratings:
AC: 200,000 A rms symmetrical.
300,000 A rms symmetrical
(Factory self-certified)

Ampere Range: 8/10 – 600 amperes

Approvals: AC: UL Listed Class J fuses per UL 248 (formerly 198C) (File No. E81895).

CSA certified HRCI-J per C22.2 #106 (File No. LR29862)

Example part number (series & amperage):
JTD025 for 25 Amp. or
JTD150 for 150 Amp.

APPLICATIONS

Fused combination motor controllers to provide IEC Type II (no damage) motor branch-circuit short-circuit and ground fault protection, Motor control centers, Transformer protection, Protection for UL Listed series-rated molded case circuit breaker panels, General purpose circuits — mains, feeders and branch circuits — especially when space is at a premium

See Document No. **7803** for **JTD_ID Indicator™ Fuse Series.**

Recommended Fuse Blocks/holders: see Documents No. **9553** or **7842** or "Dead Front" (30A & 60A) **7846**

POWR-PRO® JTD series Class J time-delay current-limiting fuses provide maximum time-delay in a package this small. While their most common use is in circuits with high inrush currents, their small size makes them ideal for use in general-purpose circuits where space is at a premium.

The JTD fuse's time-delay reduces nuisance fuse opening, thereby eliminating unnecessary downtime. Rating for rating,

Class J fuses are the most current-limiting fuse class — they minimize equipment and system damage when short circuits occur.

FEATURES/BENEFITS

- **Space-saving size** — Reduces space required in switchboards, motor control centers and control panels. May reduce cost of MCC or switchboards by reducing the number of cubicles required.
- **High interrupting capacity** — UL Listed 200,000 ampere interrupting rating (self-certified by factory to 300,000 amperes) . . . reliably interrupts even the highest short-circuit currents. Minimizes the need for time-consuming and expensive short-circuit studies.
- **Time-delay** — Eliminates needless fuse opening caused by harmless current surges and transients. JTD series time-delay POWR-PRO® fuses provide superior protection to devices with high inrush currents, such as motors and transformers.

AMPERE RATINGS:

.800	4.5	12	45	125	400
1	5	15	50	150	450
1.25	5.6	17.5	60	175	500
1.5	6	20	70	200	600
2	7	25	80	225	
2.5	8	30	90	250	
3	9	35	100	300	
4	10	40	110	350	

- **Extremely current-limiting** — The most current-limiting class of time-delay fuses that will hold 500% rated current for a minimum of ten seconds. Stops damaging short-circuit currents faster than any mechanical protective device. Provides optimum short-circuit protection to all circuit components. Tests by motor controller manufacturers show JTD series POWR-PRO® fuses provide "no-damage" protection (IEC Type II) per Standard 947. Contact our office for control manufacturers' recommendations.
- **Low resistance design** — Low resistance means lower watts loss and reduced power consumption, which can lower the utility bill. And because JTD series fuses are cooler-running, they reduce temperatures in equipment enclosures, which provides longer equipment life.

JTD Series POWR-PRO® Class J Fuses Non-Indicator • 600 V AC • Time-Delay • 8/10 – 600 Amperes

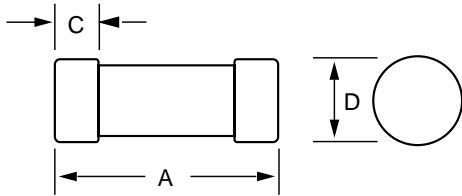


FIG. 1

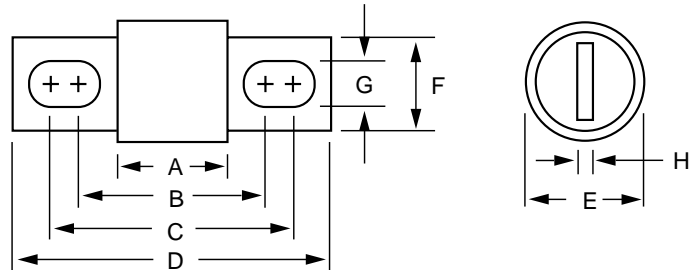


FIG. 2

AMPERES	REFER TO FIG. NO.	DIMENSIONS IN INCHES (mm in parentheses)							
		A	B	C	D	E	F	G	H
8/10– 30	1	2-1/4 (57.2)	—	1/2 (12.7)	13/16 (20.6)	—	—	—	—
35 – 60	1	2-3/8 (60.3)	—	5/8 (15.9)	1-1/16 (27.0)	—	—	—	—
70 – 100	2	2-5/8 (66.7)	3-17/32 (89.7)	3-23/32 (94.5)	4-5/8 (117.5)	1 (25.4)	3/4 (19.1)	9/32 (7.1)	1/8 (3.2)
110 – 200	2	3 (76.2)	4-9/32 (108.7)	4-15/32 (113.5)	5-3/4 (146.1)	1-1/2 (38.1)	1-1/8 (28.6)	9/32 (7.1)	3/16 (4.8)
225 – 400	2	3-3/8 (85.7)	5-1/8 (130.2)	5-3/8 (136.5)	7-1/8 (181.0)	2 (50.8)	1-5/8 (41.3)	13/32 (10.3)	1/4 (6.4)
450 – 600	2	3-3/4 (95.3)	5-27/32 (148.4)	6-5/32 (156.4)	8 (203.2)	2-1/2 (63.5)	2 (50.8)	17/32 (13.5)	3/8 (9.5)

To learn more about B-I-A please visit us at our
WEB site: www.BiaGmbH.com



JTD Series POWR-PRO® Class J Fuses

Non-Indicator • 600 V AC • Time-Delay • 8/10 – 600 Amperes



Current-Limiting Effects of JTD (600V) fuses

* Prospective RMS Symmetrical Amperes Short-Circuit Current
 ** Apparent RMS Symmetrical
 Note: Data derived from Peak Let-Thru Curves

Short Circuit Current*	Let-Thru Current** For Various Fuse Ratings						
	15A	30A	60A	100A	200A	400A	600A
5,000	550	775	1,400	1,800	2,800	4,800	5,000
10,000	750	1,000	1,800	2,450	3,600	5,700	7,750
15,000	850	1,150	2,050	2,800	4,100	6,500	9,000
20,000	900	1,200	2,200	3,000	4,400	7,250	9,700
25,000	1,000	1,300	2,300	3,300	5,000	8,000	10,500
30,000	1,050	1,400	2,500	3,500	5,100	8,400	11,000
35,000	1,150	1,500	2,600	3,700	5,400	9,000	12,000
40,000	1,200	1,575	2,700	3,900	5,600	9,200	12,500
50,000	1,250	1,700	3,000	4,200	6,000	10,000	13,000
60,000	1,350	1,800	3,300	4,500	6,400	10,500	14,000
80,000	1,450	2,000	3,600	4,900	7,200	11,200	15,500
100,000	1,555	2,100	3,800	5,200	7,800	12,200	16,500
150,000	1,800	2,350	4,200	6,000	9,000	14,500	19,000
200,000	1,900	2,500	4,400	6,500	10,000	16,000	20,500

