

MANUAL CALL POINTS**EExed, Intrinsically Safe (EExia), Weatherproof
BG Range & PB Range**

Features

- ★ Polyester enclosure – light, strong and not subject to corrosion.
- ★ 2 models:
 - Breakglass.
 - Pushbutton.
- ★ 4 basic versions available:
 - (1) Explosion protected EExe (ATEX/CENELEC),
 - (2) Explosion protected EExi (ATEX/CENELEC, GOST 'R' or CSA),
 - (3) Explosion protected Class I, Div. 2, and Class I, Zone 2 (UL),
 - (4) Weatherproof & Dust-tight/UL ordinary locations.
- ★ In line and end of line resistors and/or zener diodes can be fitted.
- ★ Variety of colours available.
- ★ Up to 9 terminals available.
- ★ Liftflap available for extra protection against inadvertent operation.
- ★ Optional LED – this indicates that the unit has been operated – useful for testing purposes.
- ★ Earth continuity option for metal glands.
- ★ 1 or 2 changeover switches.
- ★ Captive cover screws.
- ★ ATEX approved Ex II 2GD.



Breakglass Model

- ★ No hammer required – the glass is covered by a membrane thus protecting the operator from glass fragments.
 - ★ A plastic 'Break glass' or deformable operating element is available to replace the break glass*.
- Once the flexible element is pressed it bends but will not break. The unit is reset by repositioning the element. All other functions remain the same.
- ★ Complies with the British Standard for call points.
 - ★ Key operated test facility – simple but secure.
 - ★ Breakglass hammer available.

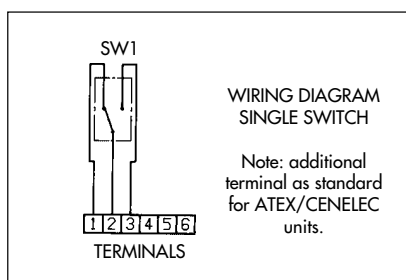
Pushbutton Model

- ★ Stayput as standard or self reset available.
- ★ Lift Flap as standard. (Not turn and push model).

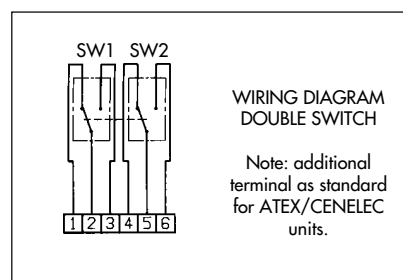
*Note: Deformable operating element does not comply with BS5839 Part 2.

Technical Specification

MODEL	BGW & PBW	*BGUL & PBUL	BGE & PBE	BGI & PBI
PROTECTION	Weatherproof/ dust proof	Explosion Protected Class I, Div 2	Explosion Protected EExed (Increased Safety)	Explosion Protected EExia (Intrinsically Safe)
CERTIFICATION	Weatherproof/ dust proof IP66/IP67	UL Listed to Class I, Div 2, Groups A-D Listing No. E186629 UL listed for ordinary locations Listing No. S8117 *Refer to UL data sheet at rear of catalogue for complete information	ATEX approved Ex II 2GD BAS02ATEX2105X (BG & PB) EExedIICT6 (switch only) EExedmIICT4 (other versions) CENELEC EN50014 EN50019 EN50018 EN50028 Suitable for use in Zones 1 & 2	ATEX approved Ex II 1GD Baseefa 03ATEX0084X (BG & PB) EExia IIC T4 CENELEC EN50014 EN50020 Suitable for use in Zones 0, 1 & 2 CSA Certification to C22.2 (PBI only) Nos.0-M, 0.4-M, 1.4-M, 25, 30-M, 94, 142-M1987, 157-M1987, 157-92, Enclosure Type 4. T4A Class I Groups A, B, C & D Cert. No. 79120 GOST 'R' Certification: Exia IIC T4, Cert. No. A-0754
VOLTAGE	Up to 254V	Up to 240V	Up to 250V	Up to 28V (IS)
CERTIFIED TEMPERATURE	-40°C to +55°C Weatherproof	-25°C to +70°C (PBUL) -25°C to +55°C (BGUL) UL Version	-20°C to +50°C	ATEX/CENELEC -40°C to +70°C (PBI) ATEX/CENELEC -40°C to +50°C (BGI) CSA -50°C to +40°C
INGRESS PROTECTION	IP66 & 67.			
BRITISH STANDARD FOR CALL POINTS	BS 5839 : Part 2 : 1983 (BG).			
TERMINALS	6 x 2.5mm ² – BGUL & PBUL only. 7 x 2.5mm ² – standard (except UL products). 9 x 2.5mm ² optional – up to 60V only.			
SWITCH RATINGS (1 or 2 changeover switches fitted)	DC - 0-30v 30-50 AC - 0-254V Note: UL versions Max Rating 240VAC, 3A			5A (resistive) or 3A (inductive) 1A resistive or inductive 5A resistive or inductive
	NOT APPLICABLE			
CABLE ENTRIES	Up to 4 entries, M16 or M20 top and bottom (1/2" NPT available on UL version).			
WEIGHT	1.2 kg. (Varies with model & entries).			
MATERIAL	Anti static U.V. resistant glass reinforced polyester.			
FINISH	Red epoxy painted finish as standard or to Customer's specification.			
RESISTORS & DIODES	Various configurations available on versions up to 24V and all "IS" versions. (Minimum Resistor value 470 Ω).			
EARTH CONTINUITY	Internal & external earth continuity is provided via an optional earth plate.			
LED INDICATION	A high intensity red LED can be fitted as an optional extra to indicate operation on versions up to 24V and all "IS" versions.			
LABELLING	BG Glass label - reads either (1) Fire Break glass – press here (2) Break glass – press here (3) Worded to Client's requirements. PB & BG Duty label - worded to Client's requirements. Rivetted on. PB & BG Tag label - worded to Client's requirements. Screwed on.			

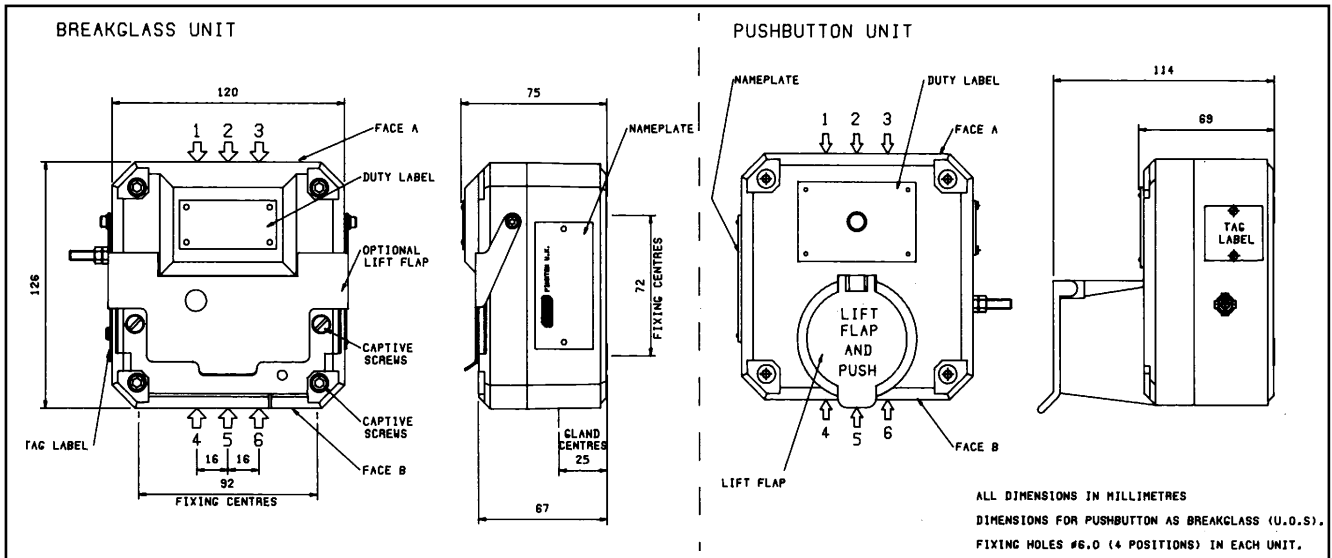


Basic single changeover switch wiring diagram



Basic double changeover switch wiring diagram

For versions containing inline and end of line resistors or diodes, please specify your requirements.



Ordering Requirements

The following code is designed to help in the selection of the correct unit. Build up the reference number by inserting the code for each component into the appropriate box.

Standard products available ex-stock as follows:

Product	Description
BGIB4B6B1DSN6R	Intrinsically safe, ATEX approved Ex II 1GD, certified EExia, T4, Zones 0, 1 & 2, glass label 'Fire Break Glass Press Here', single switch, no features, 2 x 20mm bottom entry, natural red.
BGEB4B6B1DSN6R	Explosion protected, ATEX approved Ex II 2GD, certified EExed, IIC T6, Zones 1 & 2, glass label 'Fire Break Glass Press Here', single switch, no features, 2 x 20mm bottom entry, natural red.
BGWN4B6B1ASN6R	Weatherproof, uncertified, glass label 'Fire Break Glass Press Here', single switch, no features, 2 x 20mm bottom entry only, natural red.

Model	Certification	Entries	Labels	Switches	Features	Terminals	Finish	
Model	Entries	Code	Labels	Code	Features	Code	Finish	Code
BG PB	16mm 20mm 1/2" NPT *Prefix entry size (see diagram above) with entry position code e.g. 1A, 2A. Note: 1/2" NPT entries only available on UL versions.	*A *B *C	None Glass label (1) reqd. Glass label (2) reqd. Glass label (3) reqd. Duty label reqd. Tag label reqd. Specify wording on 3, 4 or 5 as required.	0 1 2 3 4 5	None LED Lift Flap (BG only) Resistor Series Resistor EOL Diode Earth Continuity Turn & Push (PB only) Self reset (PB only) Special Resistor Plastic element replaces Break glass *Specify values	N A B *C *D *E F T M S	Red (Standard) Natural Blue Yellow Grey Yellow/Black Stripes Other-specify	R N B Y G X S
Certification	Code		Switches	Code	Terminals	Code		
ATEX/CENELEC - EExe ATEX/CENELEC - EExi CSA - Exi UL - Class I, Div. 2 UL - Ordinary locations GOST 'R' - Exi Uncertified	EB IB IC UL ULW IG WN		Single changeover Double changeover *Prefix with voltage A for A.C. - D for D.C. except for BGL.	*S *D	6 x 2.5mm ² (UL only) *7 x 2.5mm ² (standard) 9 x 2.5mm ² (optional)	6 7 9		
*Note: only PB is available CSA certified.								

All the above specifications, dimensions, weights and tolerances are nominal (typical) and reserve the right to vary all data without prior notice. No liability is accepted for any consequence of use.